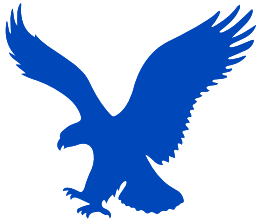


MBV80 Diaphragm Pump Ductile Iron

Stainless Steel Center Block Pump



EMOCLEW AMERICA



Diaphragm Pump

MBV80 Diaphragm Pump Ductile Iron

Stainless Steel Center Block Pump



As a specialist of MBV80 Diaphragm Pump Ductile Iron, Emoclew America can offer you comprehensive selections of goods in this industry.

Description

Features

- 3 in (76.2 mm) ANSI center-ported that is internally threaded 3 npt or bspt
- Bolted leak-free, flanged connections — no clamp bands used
- Large flow paths for high viscosities
- Easy air valve maintenance
- Heavy-duty construction
- Fluid flow up to 275 gpm (1040 lpm)

Typical Applications

- Chemical transfers
- Filter press-feed
- Dewatering

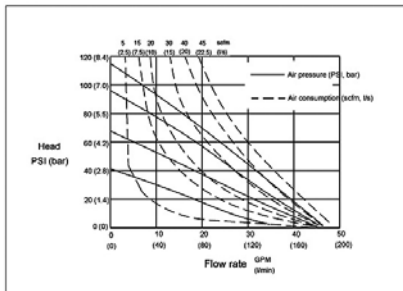
Typical Fluids Handled

- Chemicals
- Bulk paint resins
- Ceramic slip

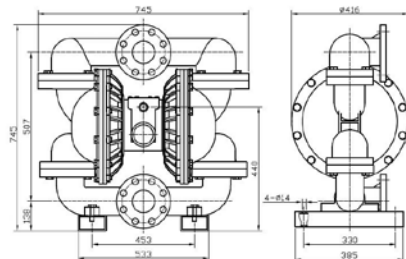
Parameter Table

MBV80 Diaphragm Pump Ductile Iron - Technical Specifications	
Max Working Pressure	120psi(0.84Mpa ,8.4bar)
Max Flow Rate	275 gpm(1041 lpm)
Max reciprocating Speed	135cpm
Max.Suction Height (Dry Sucking)	5m
Max.permitted Grain	9.4mm
Max Air Consumption	180scfm(90L/s)
Air Inlet size	3/4 in.npt(f)
Air Outlet size	1 in.npt(f)
Fluid Inlet size	3 in.npt(f)
Fluid Outlet size	3 in.npt(f)
Weight	Aluminum pump 77kg; Stainless steel 110.0kg; Ductile Iron 180kg

Diagram



Installation



EMOCLEW AMERICA COMPANY LLC

7901 Kingspointe PKWY SUITE 28 - Orlando - FL - 32819 - USA

+1 (407) 683-6437

emoclew@emoclewusa.com | info@emoclewpumps.com | www.emoclew.com