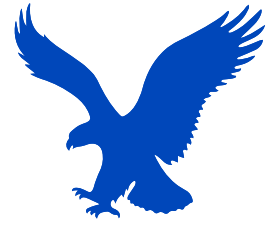


MBV50 Stainless Steel Center Block Pump

Stainless Steel Center Block Pump



EMOCLEW AMERICA



Diaphragm Pump

MBV50 Stainless Steel Center Block Pump

Stainless Steel Center Block Pump



As a specialist of MBV50 Stainless Steel Center Block Pump, Emoclew America can offer you comprehensive selections of goods in this industry.

Description

Features

- 2 in (50.8 mm) end-porting
- Larger ports for more flow – up to 150 gpm (568 lpm)
- Fluid pressure up to 120 psi (8.4 bar, 0.84 MPa)
- Patented, high-reliability closed center air valve is online serviceable
- Lube-free operation
- Epoxy-coated air section
- External controller for optional remote operation

Typical Applications

- Drum fluid transfer
- Bulk fluid supply
- Chemical evacuation
- Ground water and sump evacuation
- Waste fluid removal
- Tank and bilge drainage
- Slurry and sludge transfer
- Filter press feed

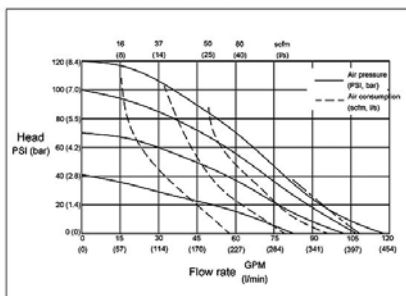
Typical Fluids Handled

- Alkalies and solvents
- Suspensions and dispersions
- Solvents, latex paints, varnishes, resins and adhesives
- Sludge and waste water

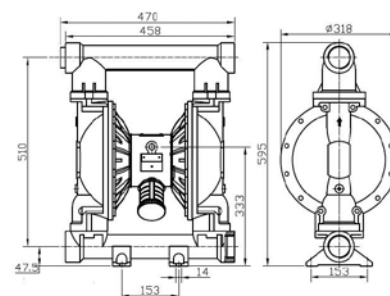
Parameter Table

MBV50 Stainless Steel Center Block Pump - Technical Specifications	
Max Working Pressure	120psi(0.84Mpa ,8.4bar)
Max Flow Rate	150 gpm(570 lpm)
Max Reciprocating Speed	145cpm
Max Suction Height (Dry Suction)	5m
Max Permitted Grain	6mm
Max. Air Consumption	140scfm(70L/s)
Air Inlet size	1/2 in.npt(f)
Air Outlet size	1/2 in.npt(f)
Fluid Inlet size	2 in.npt(f)
Fluid Outlet size	2 in.npt(f)
Weight	Aluminum pump 29kg ; Stainless steel 47kg; Ductile Iton 66kg

Diagram



Installation



EMOCLEW AMERICA COMPANY LLC

7901 Kingspointe PKWY SUITE 28 - Orlando - FL - 32819 - USA

+1 (407) 683-6437

emoclew@emoclewusa.com | info@emoclewpumps.com | www.emoclew.com