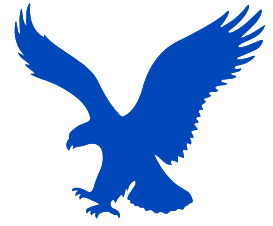


# MBV25 Stainless Steel Center Block Pump

**Stainless Steel Center Block Pump**



**EMOCLEW AMERICA**



**Diaphragm Pump**

# MBV25 Stainless Steel Center Block Pump

## Stainless Steel Center Block Pump



Quality MBV25 Stainless Steel Center Block Pump suppliers & exporter – all products made in USA.

### Description

#### Features

- 1 in (25.4 mm) center- and end-ported
- High flow – 40 gpm (151 lpm) in a compact, portable size
- Fluid pressure to 120 psi (8.4 bar, 0.84 MPa)
- Epoxy-coated center section for corrosive environments
- Equipped with an effective and reliable air valve system
- External controller for optional remote operation

#### Typical Applications

- Drum fluid transfer
- Unloading fluids

- Chemical evacuation
- Ceramic glaze supply
- Dewatering and sump evacuation
- Tank and sump drainage

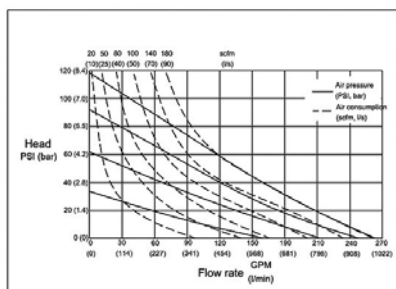
#### Typical Fluids Handled

- Chemicals
- Contaminated surface water
- Adhesives, varnishes, dispersions, solvents and stains
- Resins, latexes, wood preservative stains, concrete paints and primers
- Ceramic slips and slurries

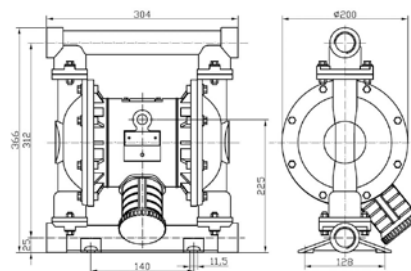
### Parameter Table

MBV25 Stainless Steel Center Block Pump - Technical Specifications	
Max Working Pressure	120psi(0.84Mpa ,8.4bar)
Max Flow Rate	40 gpm(150 lpm)
Max Reciprocating Speed	276cpm
Max Suction Height(Dry Sucking)	5.48m
Max Permitted Grain	4mm
Max.Air Consumption	45scfm(22.5L/s)
Air Inlet size	1/2 in.npt(f)
Air Outlet size	1/2 in.npt(f)
Fluid Inlet size	1 in.npt
Fluid Outlet size	1 in.npt(f)
Weight	Aluminum pump 8.2kg Stainless steel 15kg

### Diagram



### Installation



#### EMOCLEW AMERICA COMPANY LLC

7901 Kingspointe PKWY SUITE 28 - Orlando - FL - 32819 - USA

+1 (407) 683-6437

emoclew@emoclewusa.com | info@emoclewpumps.com | www.emoclew.com