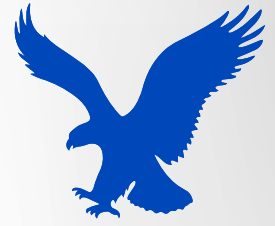


# Diaphragm Pumps



**EMOCLEW AMERICA**



[www.emoclew.com](http://www.emoclew.com)

# Table of Contents

Read more on [www.emoclew.com](http://www.emoclew.com)



EMOCLEW AMERICA

<b>Industries .....</b>	<b>3</b>
<b>Application .....</b>	<b>4</b>
<b>Plastic Center Block Pump .....</b>	<b>5</b>
MBV06 PP Plastic Center Block Pump .....	5
MBV10 PP Plastic Center Block Pump .....	6
MBV10 PVDF Plastic Center Block Pump .....	7
MBV15 PP Plastic Center Block Pump .....	8
MBV15 PVDF Plastic Center Block Pump .....	9
MBV20 PP Plastic Cente Block Pump .....	10
MBV25 (PP) Plastic Center Block Pump .....	11
MBV25 (PVDF) Plastic Center Block Pump .....	12
MBV25 Plastic Center Block Pump .....	13
MBV25 PP Plastic Center Block Pump .....	14
MBV25 PVDF Plastic Center Block Pump .....	15
MBV40 (PP) Plastic Center Block Pump .....	16
MBV40 (PVDF) Plastic Center Block Pump .....	17
MBV40 Plastic Center Block Pump .....	18
MBV40 PP Plastic Center Block Pump .....	19
MBV40 PVDF Plastic Center Block Pump .....	20
MBV50 PP Plastic Center Block Pump .....	21
MBV50 PVDF Plastic Center Block Pump .....	22
MBV80 PP Plastic Center Block Pump .....	23
<b>Aluminium Diaphragm Pump .....</b>	<b>24</b>
MBV10 Aluminium .....	24
MBV15 Aluminium Diaphragm Pump .....	25
MBV25 Aluminium Diaphragm Pump .....	26
MBV40 Aluminium Diaphragm Pump .....	27
MBV50 Aluminium Diaphragm Pump .....	28
MBV80 Aluminium Diaphragm Pump .....	29
<b>Stainless Steel Center Block Pump .....</b>	<b>30</b>
MBV15 Stainless Steel Center Block Pump .....	30
MBV25 Diaphragm Pump Ductile Iron .....	31
MBV25 Stainless Full Steel Center Block Pump .....	32
MBV25 Stainless Steel Center Block Pump .....	33
MBV40 Diaphragm Pump Ductile Iron .....	34
MBV40 Stainless Full Steel Center Block Pump .....	35
MBV40 Stainless Steel Center Block Pump .....	36
MBV50 Diaphragm Pump Ductile Iron .....	37
MBV50 Stainless Full Steel Center Block Pump .....	38
MBV50 Stainless Steel Center Block Pump .....	39
MBV80 Diaphragm Pump Ductile Iron .....	40
MBV80 Diaphragm Pump Stainless Steel .....	41
<b>Spare Parts .....</b>	<b>42</b>
Spare Parts of MBV .....	42
Spare Parts of GRACO .....	43
Spare Parts of ARO .....	43

# Industries

Where use our products



## Chemical Industry

**Accuracy, flexibility and performance for the industry's harshest chemical processes.**

The chemical industry is focused on the synthesis of finished or intermediate products. In chemical processing, the toxic nature of fluids, combined with numerous temperature and pressure variations during production requires metering pumps, packages, and mixing technology that is safe, adaptable and highly-reliable.



## General Industry

**Pumps, Mixers, and Systems**

EMOCLEW AMERICA provides solutions for almost all industries that process, produce and prepare end products. Our experience and the reliability of our technology is unmatched with a proven track record. We have the largest and most comprehensive selection of metering pump technology to accurately control chemical dosing. Along with in-house applications expertise, we can select and customize the right technology for your process-related applications.



## Industrial Wastewater

**Maximize uptime, minimize maintenance costs while complying with wastewater treatment and disposal regulations.**

Industrial wastewater must be treated efficiently, cost-effectively and within the appropriate quality standards. That's why EMOCLEW has metering pump and agitation solutions that assist in the necessary, proper disposal of wastewater.



## Municipal Water and Waste Treatment

**Delivering safe water purification, efficient waste treatment, and lower life-cycle costs.**

Municipalities must provide safe potable water and effectively dispose of wastewater while complying with regulatory requirements. In addition, they want to ensure efficient, cost-effective operations with minimal downtime.



## Oil & Gas

**EMOCLEW's customized solutions maximize oil & gas production, and safely process refined product.**

EMOCLEW has decades and hundreds of thousands of installations within the oil and gas industry. From upstream to downstream and offshore to onshore, our metering pumps, packages, and mixers provide accurate chemical injection and precise agitation to meet your application requirements.



## Petrochemical

**Maximize your production uptime with metering pumps and packages.**

Petrochemicals are the feedstock for polymers, solvents, detergents, adhesives, plastics, lubricants, and other materials. Chemical plants produce this feedstock by fluid catalytic cracking of petroleum fractures. This processing requires numerous chemicals such as corrosion inhibitors, emulsion breakers, oxygen scavengers, and many more.



## Power Generation

**Efficient designs for maximum uptime**

Cooling and boiler water treatment is one of the most critical areas because a failure will directly affect power generation. Proper chemical treatment assures maximum uptime of cooling towers and boilers thus reducing operational costs and assuring the process is optimized.

# Application

Why use our products



## Chemical Dosing

Unsurpassed Reliability and Accuracy for Critical Chemical Dosing Controlled-volume metering pumps and customized solutions that maximize uptime and lower maintenance costs.



## Chemical Processing

Chemical Processing Safely and reliably handle harsh processing operations with customizable metering pumps and packages



## Crude Oil Storage Applications

### Maximizing Crude Oil Storage Capacity with Mixing Technology.

When crude oil is produced, it's accompanied by sand, salt and other unwanted debris. Water is also added to allow easier pumping into the pipeline. These impurities are removed in the refining process – but until the crude is delivered to the refinery, bottom sludge & water (BS&W) can settle on the bottom of an oil tank, a process called "Sanding-In" takes place, which forces the tank operator to empty the tank and engage in a lengthy, expensive and environmentally challenging cleanup.



## Oil Platform

### High-Pressure Methanol Chemical Injection Applications.

Methanol is a commonly used chemical in the oil and gas industry, mainly in offshore applications. It is injected continuously or intermittently, depending on the process, to prevent hydrate formation. While commonly used, methanol can be volatile and dangerous to both people and the environment.



## Surface Water Treatment

### Enabling safe drinking water with proper dosing technology.

Surface water typically contains suspended solids, bacteria, algae, organic matter and other impurities that create health risks and can also lead to a bad taste, a foul odor, and cloudy or unclear water. To remove these impurities, the process of water treatment consists of dosing flocculants, coagulants, disinfectants, and many other chemicals to control pH and other aspects of water quality. The process has several dosing points and metering pump performance is critical.



Read more about our products,  
industries and applications on

[www.emoclew.com](http://www.emoclew.com)

# MBV06 PP Plastic Center Block Pump

## Plastic Center Block Pump

As the best USA MBV06 PP Plastic Center Block Pump supplier, Emoclew America provides quality MBV06 PP Plastic Center Block Pump to global clients.



## Description

### Features

- 1/4 in (6.35 mm) end-porting
- Low-cost, compact design
- Spring check valves for superior priming in any mounting configuration
- True-formed PTFE and Santoprene diaphragms for enhanced performance
- External controller for optional remote operation

### Typical Applications

- Supply pump for OEM applications
- Printing ink supply
- Wastewater chemical supply
- Plating/surface finishing
- Chemical dosing

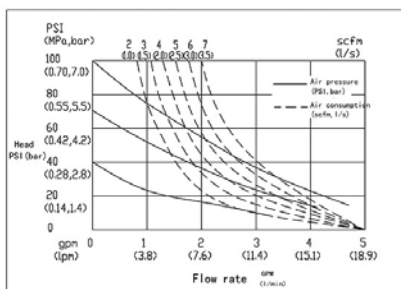
### Typical Fluids Handled

- Waterborne materials, some HHC's
- Paints, coatings, inks and dyes
- Car wash chemicals
- Laundry chemicals and detergents
- Chemicals
- Inks

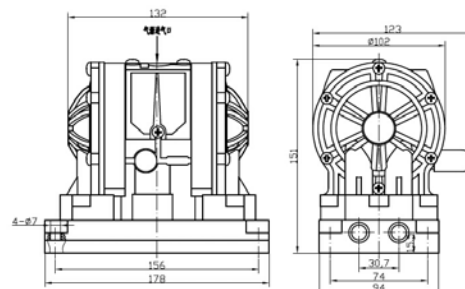
## Parameter Table

MBV06 PP Plastic Center Block Pump - Technical Specifications	
Max Working Pressure	100psi(0.7Mpa ,7bar)
Max Flow Rate	4.5gpm(17lpm)
Max Reciprocating Speed	Dry running320cpm; Wet running250cpm
Max Suction Height (Dry Sucking)	3m
Max Permitted Grain	1.5mm
Max Air Consumption	7.0scfm(3.5L/s)
Air Inlet Size	1/4in.npt(f)1/4in.bsp(f)
Air Outlet Size	1/4in.npt(f)1/4in.bsp(f)
Fluid Inlet Size	1/4in.npt(f)1/4in.bsp(f)
Fluid Outlet Size	1/4in.npt(f)1/4in.bsp(f)
Weight	PP pump 1.1kg

## Diagram



## Installation





# MBV10 PP Plastic Center Block Pump

## Plastic Center Block Pump

You can buy good quality MBV10 PP Plastic Center Block Pump, we are the best distributor from USA market.



## Description

### Features

- 3/8 in (9.52 mm) end-porting
- Fully-groundable acetal model
- Delivery up to 7 gpm (26.5 lpm)
- Operates on as little as 12 psi (0.8 bar, 0.08 MPa) air pressure
- Quiet operation

### Typical Applications

- transfer for fluids up to 1000 centipoise
- Circulation of low viscosity inks, stains and dyes
- Coolant circulation and evacuation
- Waste fluid removal

- On-demand batch chemical metering
- Low viscosity adhesive supply
- Consistent low pressure air spray or HVLP supply

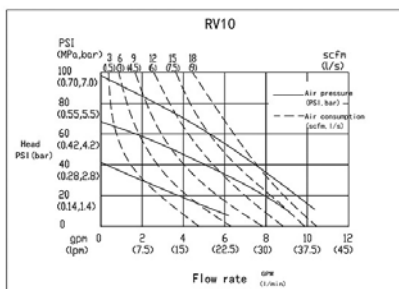
### Typical Fluids Handled

- Paints
- Lubricants
- Inks
- Stains
- Solvents
- Coatings
- Dyes

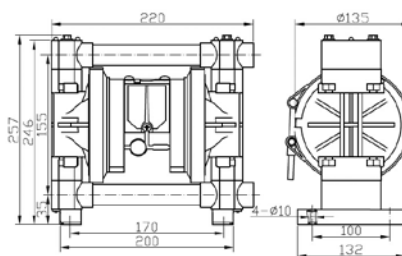
## Parameter Table

MBV10 PP Plastic Center Block Pump - Technical Specifications	
Max Working Pressure	100psi(0.7Mpa ,7bar)
Max Flow Rate	10.5gpm(38lpm)
Max Reciprocating Speed	330cpm
Max Suction Height (Dry Sucking)	Dry3.7m; Wet6.4m
Max Permitted Grain	1/16in.(1.6mm)
Max.Air Consumption	18scfm(9L/s)
Air Inlet size	1/4in.npt(f)
Air Outlet size	1/4in.npt(f)
Fluid Inlet size	3/8in.npt(f)
Fluid Outlet size	3/8in.npt(f)
Weight	PP pump 2.5kg

## Diagram



## Installation



# MBV10 PVDF Plastic Center Block Pump

## Plastic Center Block Pump

You can buy good quality MBV10 PVDF Plastic Center Block Pump, we are the best distributor from USA market.



## Description

### Features

- 3/8 in (9.52 mm) end-porting
- Fully-groundable acetal model
- Delivery up to 7 gpm (26.5 lpm)
- Operates on as little as 12 psi (0.8 bar, 0.08 MPa) air pressure
- Quiet operation

### Typical Applications

- Drum transfer for fluids up to 1000 centipoise
- Circulation of low viscosity inks, stains and dyes
- Coolant circulation and evacuation
- Waste fluid removal

- On-demand batch chemical metering
- Low viscosity adhesive supply
- Consistent low pressure air spray or HVLP supply

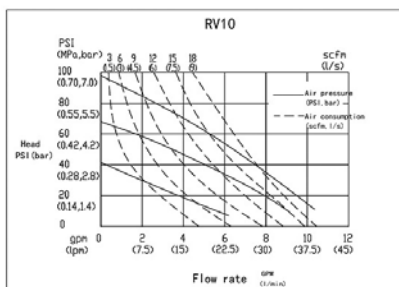
### Typical Fluids Handled

- Paints
- Lubricants
- Inks
- Stains
- Solvents
- Coatings
- Dyes

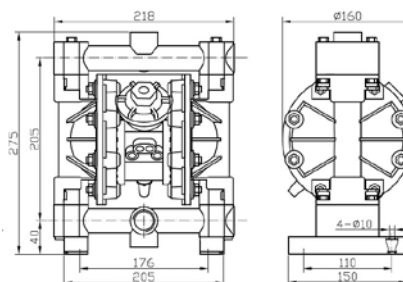
## Parameter Table

MBV10 PVDF Plastic Center Block Pump - Technical Specifications	
Max Working Pressure	100psi(0.7Mpa ,7bar)
Max Flow Rate	10.5gpm(38lpm)
Max Reciprocating Speed	330cpm
Max Suction Height (Dry Sucking)	Dry3.7m; Wet6.4m
Max Permitted Grain	1/16in.(1.6mm)
Max.Air Consumption	18scfm(9L/s)
Air Inlet size	1/4in.npt(f)
Air Outlet size	1/4in.npt(f)
Fluid Inlet size	3/8in.npt(f)
Fluid Outlet size	3/8in.npt(f)
Weight	PP pump 2.5kg

## Diagram



## Installation



# MBV15 PP Plastic Center Block Pump

## Plastic Center Block Pump

Before shipping, Emoclew America MBV15 PP Plastic Center Block Pump are packed with strong wooden case with waterproof cloth to avoid any damage.



## Description

### Features

- 1/2 in (12.7 mm) center- and end-porting
- No seals to leak or fail
- Quiet running — less than 85 dB with easy-to-use remote muffler capability for even lower noise levels
- High flow rates in a small, portable package
- External controller for optional remote operation

### Typical Applications

- Machine lubrication servicing
- Drum evacuation
- Plating and dip tanks
- Water treatment

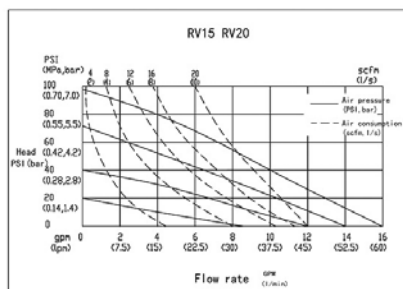
### Typical Fluids Handled

- Cleaning fluids and detergents
- Chemicals
- Ceramic glazes
- Inks
- Solvents and flammables
- Acids and bases

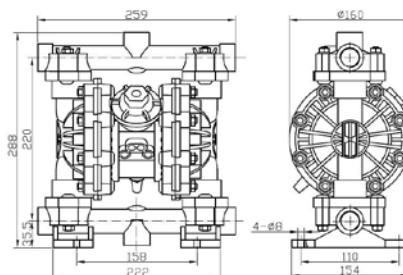
## Parameter Table

MBV15 PP Plastic Center Block Pump - Technical Specifications	
Max Working Pressure	100psi(0.7Mpa ,7bar)
Max Flow Rate	15gpm(57lpm)
Max Reciprocating Speed	400cpm
Max Suction Height (Dry Sucking)	4.5m
Max Permitted Grain	3/32in.(2.5mm)
Max.Air Consumption	20gpm(10L/s)
Air Inlet size	1/4in.npt(f)
Air Outlet size	3/8in.npt(f)
Fluid Inlet size	1/2 in.npt(f)or bspt(f)
Fluid Outlet size	1/2 in.npt(f)or bspt(f)
Weight	PVDF pump 3.7kg PP pump 2.7kg

## Diagram



## Installation





# MBV15 PVDF Plastic Center Block Pump

## Plastic Center Block Pump

Before shipping, Emoclew America MBV15 PVDF Plastic Center Block Pump are packed with strong wooden case with waterproof cloth to avoid any damage.



## Description

### Features

- 1/2 in (12.7 mm) center- and end-porting
- No seals to leak or fail
- Quiet running — less than 85 dB with easy-to-use remote muffler capability for even lower noise levels
- High flow rates in a small, portable package
- External controller for optional remote operation

### Typical Applications

- Machine lubrication servicing
- Drum evacuation
- Plating and dip tanks
- Water treatment

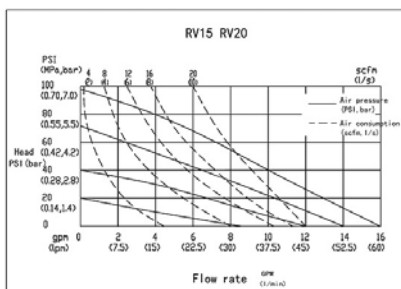
### Typical Fluids Handled

- Cleaning fluids and detergents
- Chemicals
- Ceramic glazes
- Inks
- Solvents and flammables
- Acids and bases

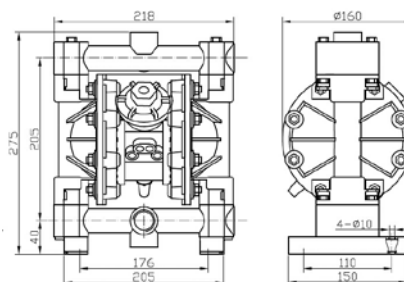
## Parameter Table

MBV15 PVDF Plastic Center Block Pump - Technical Specifications	
Max Working Pressure	100psi(0.7Mpa ,7bar)
Max Flow Rate	15gpm(57lpm)
Max Reciprocating Speed	400cpm
Max Suction Height (Dry Sucking)	4.5m
Max Permitted Grain	3/32in.(2.5mm)
Max.Air Consumption	20gpm(10L/s)
Air Inlet size	1/4in.npt(f)
Air Outlet size	3/8in.npt(f)
Fluid Inlet size	1/2 in.npt(f)or bspt(f)
Fluid Outlet size	1/2 in.npt(f)or bspt(f)
Weight	PVDF pump 3.7kg PP pump 2.7kg

## Diagram



## Installation



# MBV20 PP Plastic Cente Block Pump

## Plastic Center Block Pump

As the best China MBV20 PP Plastic Cente Block Pump supplier, Emoclew America provides quality MBV20 PP Plastic Cente Block Pump to global clients.



### Description

#### Features

- 3/4 in (19.05 mm) center- and end- porting
- No seals to leak or fail
- Quiet running — less than 85 dB with easy-to-use remote muffler capability for even lower noise levels
- High flow rates in a small, portable package
- External controller for optional remote operation

#### Typical Applications

- Machine lubrication servicing
- Drum evacuation
- Plating and dip tanks
- Water treatment

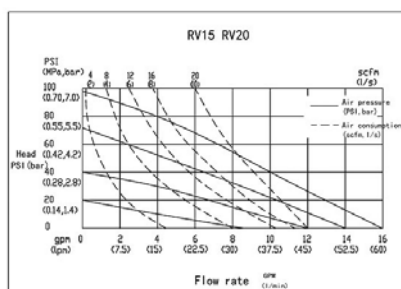
#### Typical Fluids Handled

- Cleaning fluids and detergents
- Chemicals
- Ceramic glazes
- Inks
- Solvents and flammables
- Acids and bases

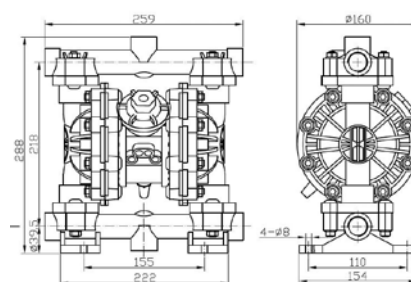
### Parameter Table

MBV20 PP Plastic Cente Block Pump - Technical Specifications	
Max Working Pressure	100psi(0.7Mpa ,7bar)
Max Flow Rate	15gpm(57lpm)
Max Reciprocating Speed	400cpm
Max Suction Height (Dry Sucking)	4.5m
Max Permitted Grain	3/32in.(2.5mm)
Max.Air Consumption	20gpm(10L/s)
Air Inlet size	1/4in.npt(f)
Air Outlet size	3/8in.npt(f)
Fluid Inlet size	3/4 in.npt(f)or bspt(f)
Fluid Outlet size	3/4 in.npt(f)or bspt(f)
Weight	PVDF pump 3.7kg PP pump 2.8kg

### Diagram



### Installation



# MBV25 (PP) Plastic Center Block Pump

## Plastic Center Block Pump



Emoclew America clients as the god trying best to satisfy all kinds of their requirements to manufacture the MBV25 (PP) Plastic Center Block Pump.

### Description

#### Features

- 1/4 in (6.35 mm) end-porting
- Low-cost, compact design
- Spring check valves for superior priming in any mounting configuration
- True-formed PTFE and Santoprene diaphragms for enhanced performance
- External controller for optional remote operation

#### Typical Applications

- Supply pump for OEM applications
- Printing ink supply
- Wastewater chemical supply
- Plating/surface finishing
- Chemical dosing

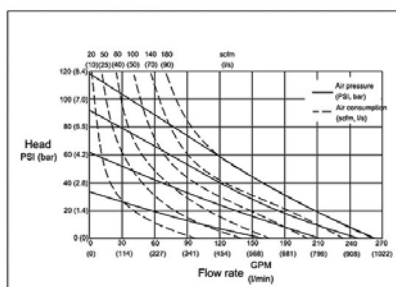
#### Typical Fluids Handled

- Waterborne materials, some HHC's
- Paints, coatings, inks and dyes
- Car wash chemicals
- Laundry chemicals and detergents
- Chemicals
- Inks

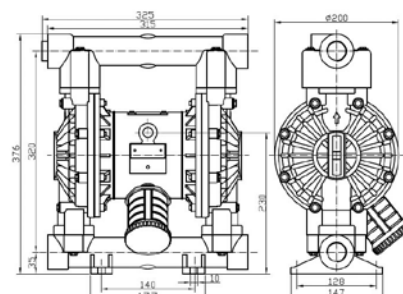
### Parameter Table

MBV25 (PP) Plastic Center Block Pump - Technical Specifications	
Max Working Pressure	120psi(0.84Mpa ,8.4bar)
Max Flow Rate	40 gpm(150 lpm)
Max Reciprocating Speed	276cpm
Max Suction Height ( Dry Sucking)	5.48m
Max Permitted Grain	4mm
Max.Air Consumption	45scfm(22.5L/s)
Air Inlet size	1/2 in.npt(f)
Air Outlet size	1/2 in.npt(f)
Fluid Inlet size	1 in.npt(f)
Fluid Outlet size	1 in.npt(f)
Weight	PVDF Pump 10.0kg PP pump 8.0kg

### Diagram



### Installation



# MBV25 (PVDF) Plastic Center Block Pump

## Plastic Center Block Pump



Emoclew America clients as the god trying best to satisfy all kinds of their requirements to manufacture the MBV25 (PVDF) Plastic Center Block Pump.

### Description

#### Features

- 1 in (25.4 mm) end-porting
- High flow – 40 gpm (151 lpm) in a compact, portable size
- Fluid pressure to 120 psi (8.4 bar, 0.84 MPa)
- Epoxy-coated center section
- External controller for optional remote operation

#### Typical Applications

- Drum fluid transfer
- Unloading fluids
- Transferring high temperature acids
- Chemical evacuation

- Tank and sump drainage
- Circulating plating chemical tank

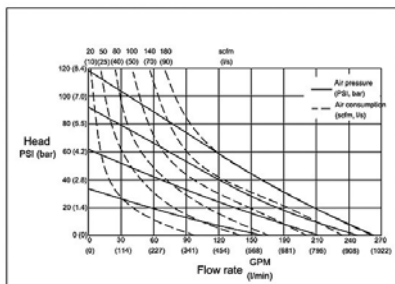
#### Typical Fluids Handled

- Chemicals
- Acetic acid
- Chromic acid
- Hydrochloric acid
- Hydrofluoric acid
- Sulfuric acid
- Nitric acid
- Phosphoric acid

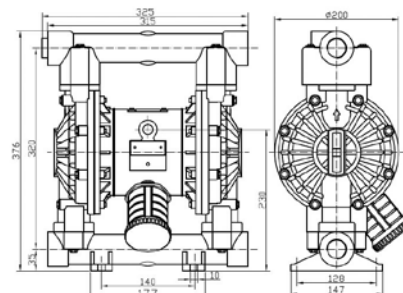
### Parameter Table

MBV25 (PVDF) Plastic Center Block Pump - Technical Specifications	
Max Working Pressure	120psi(0.84Mpa ,8.4bar)
Max Flow Rate	40 gpm(150 lpm)
Max Reciprocating Speed	276cpm
Max Suction Height ( Dry Sucking)	5.48m
Max Permitted Grain	4mm
Max.Air Consumption	45scfm(22.5L/s)
Air Inlet size	1/2 in.npt(f)
Air Outlet size	1/2 in.npt(f)
Fluid Inlet size	1 in.npt(f)
Fluid Outlet size	1 in.npt(f)
Weight	PVDF Pump 10.0kg PP pump 8.0kg

### Diagram



### Installation



# MBV25 Plastic Center Block Pump

## Plastic Center Block Pump



You can buy good quality MBV25 Plastic Center Block Pump, we are the best distributor from USA market.

## Description

### Features

- 1 in (25.4 mm) end-porting
- High flow – 40 gpm (151 lpm) in a compact, portable size
- Fluid pressure to 120 psi (8.4 bar, 0.84 MPa)
- Epoxy-coated center section
- External controller for optional remote operation

### Typical Applications

- Drum fluid transfer
- Unloading fluids
- Transferring high temperature acids
- Chemical evacuation

- Tank and sump drainage
- Circulating plating chemical tank

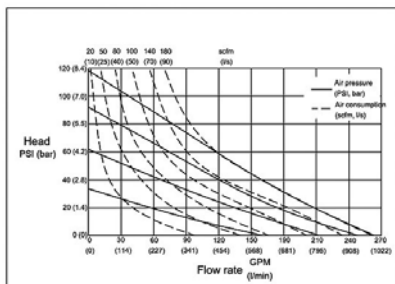
### Typical Fluids Handled

- Chemicals
- Acetic acid
- Chromic acid
- Hydrochloric acid
- Hydrofluoric acid
- Sulfuric acid
- Nitric acid
- Phosphoric acid

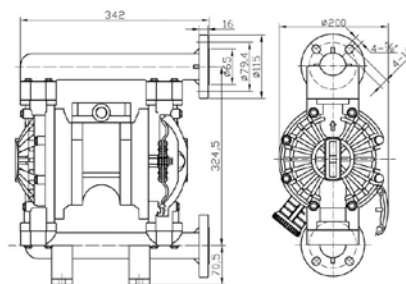
## Parameter Table

MBV25 Plastic Center Block Pump - Technical Specifications	
Max Working Pressure	120psi(0.84Mpa ,8.4bar)
Max Flow Rate	40gpm(150lpm)
Max Reciprocating Speed	276cpm
Max Suction Height (Dry Sucking)	5.48m
Max Permitted Grain	4mm
Max.Air Consumption	45scfm(22.5L/s)
Air Inlet size	1/2in.npt(f)
Air Outlet size	1/2in.npt(f)
Fluid Inlet size	1 in.npt(f)
Fluid Outlet size	1 in.npt(f)
Weight	PVDF pump 10.0kg; PP pump 8.0kg

## Diagram



## Installation



# MBV25 PP Plastic Center Block Pump

## Plastic Center Block Pump



As a specialist of MBV25 PP Plastic Center Block Pump, Emoclew America can offer you comprehensive selections of goods in this industry.

### Description

#### Features

- 1 in (25.4 mm) end-porting
- High flow – 40 gpm (151 lpm) in a compact, portable size
- Fluid pressure to 120 psi (8.4 bar, 0.84 MPa)
- Epoxy-coated center section
- External controller for optional remote operation

#### Typical Applications

- Drum fluid transfer
- Unloading fluids
- Transferring high temperature acids
- Chemical evacuation

- Tank and sump drainage
- Circulating plating chemical tank

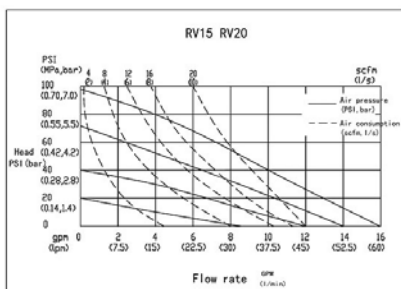
#### Typical Fluids Handled

- Chemicals
- Acetic acid
- Chromic acid
- Hydrochloric acid
- Hydrofluoric acid
- Sulfuric acid
- Nitric acid
- Phosphoric acid

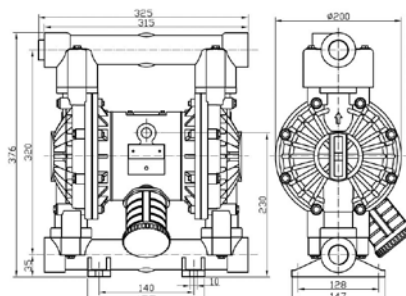
### Parameter Table

MBV25 PP Plastic Center Block Pump - Technical Specifications	
Max Working Pressure	120psi(0.84Mpa ,8.4bar)
Max Flow Rate	40 gpm(150 lpm)
Max Reciprocating Speed	276cpm
Max Suction Height ( Dry Sucking)	5.48m
Max Permitted Grain	4mm
Max.Air Consumption	45scfm(22.5L/s)
Air Inlet size	1/2 in.npt(f)
Air Outlet size	1/2 in.npt(f)
Fluid Inlet size	1 in.npt(f)
Fluid Outlet size	1 in.npt(f)
Weight	PVDF Pump 10.0kg PP pump 8.0kg

### Diagram



### Installation





# MBV25 PVDF Plastic Center Block Pump

## Plastic Center Block Pump



As a specialist of MBV25 PVDF Plastic Center Block Pump, Emoclew America can offer you comprehensive selections of goods in this industry.

### Description

#### Features

- 1 in (25.4 mm) end-porting
- High flow – 40 gpm (151 lpm) in a compact, portable size
- Fluid pressure to 120 psi (8.4 bar, 0.84 MPa)
- Epoxy-coated center section
- External controller for optional remote operation

#### Typical Applications

- Drum fluid transfer
- Unloading fluids
- Transferring high temperature acids
- Chemical evacuation

- Tank and sump drainage
- Circulating plating chemical tank

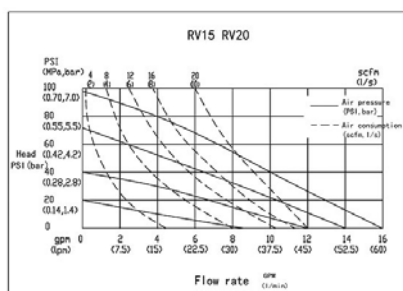
#### Typical Fluids Handled

- Chemicals
- Acetic acid
- Chromic acid
- Hydrochloric acid
- Hydrofluoric acid
- Sulfuric acid
- Nitric acid
- Phosphoric acid

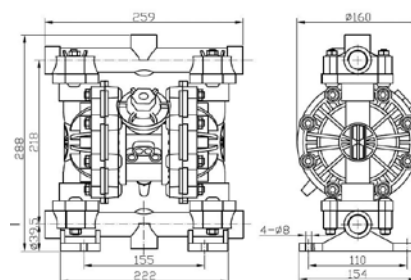
### Parameter Table

MBV25 PVDF Plastic Center Block Pump - Technical Specifications	
Max Working Pressure	120psi(0.84Mpa ,8.4bar)
Max Flow Rate	40 gpm(150 lpm)
Max Reciprocating Speed	276cpm
Max Suction Height ( Dry Sucking)	5.48m
Max Permitted Grain	4mm
Max.Air Consumption	45scfm(22.5L/s)
Air Inlet size	1/2 in.npt(f)
Air Outlet size	1/2 in.npt(f)
Fluid Inlet size	1 in.npt(f)
Fluid Outlet size	1 in.npt(f)
Weight	PVDF Pump 10.0kg PP pump 8.0kg

### Diagram



### Installation



# MBV40 (PP) Plastic Center Block Pump

## Plastic Center Block Pump

As a specialist of MBV40 (PP) Plastic Center Block Pump, Emoclew America can offer you comprehensive selections of goods in this industry.



### Description

#### Features

- 1-1/2 in (38.1 mm) end-porting
- High flow – 100 gpm (378 lpm) in a compact, portable size
- Fluid pressure to 120 psi (8.4 bar, 0.84 MPa)
- Patented, high-reliability closed center air valve is online serviceable
- Lube-free operation
- Epoxy-coated air section
- External controller for optional remote operation

#### Typical Applications

- Tank transfer
- Tank stripping
- Chemical tank plating
- Transferring high temperature acids and gases

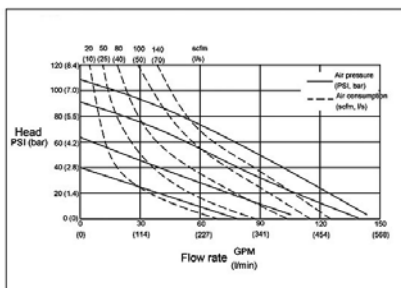
#### Typical Fluids Handled

- Chemicals
- Corrosive fluids
- Acids and gases: acetic, chromic, hydrochloric, hydrofluoric, sulfuric, nitric and phosphoric

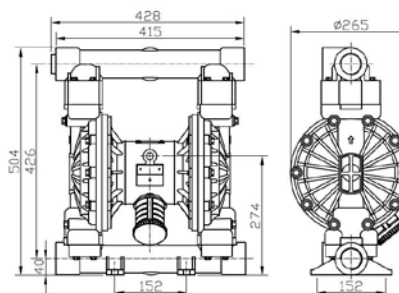
### Parameter Table

MBV40 (PP) Plastic Center Block Pump - Technical Specifications	
Max Working Pressure	120psi(0.84Mpa ,8.4bar)
Max Flow Rate	118 gpm(446 lpm)
Max Reciprocating Speed	200cpm
Max Suction Height (Dry Sucking)	5m
Max Permitted Grain	5mm
Max. Air Consumption	80scfm(40L/s)
Air Inlet size	1/2 in.npt(f)
Air Outlet size	1/2 in.npt(f)
Fluid Inlet size	1 1/2 in.npt(f)
Fluid Outlet size	1 1/2 in.npt(f)
Weight	PVDF pump 20.0kg PP pump 16.0kg

### Diagram



### Installation



# MBV40 (PVDF) Plastic Center Block Pump

## Plastic Center Block Pump



As a specialist of MBV40 (PVDF) Plastic Center Block Pump, Emoclew America can offer you comprehensive selections of goods in this industry.

### Description

#### Features

- 1-1/2 in (38.1 mm) end-porting
- High flow – 100 gpm (378 lpm) in a compact, portable size
- Fluid pressure to 120 psi (8.4 bar, 0.84 MPa)
- Patented, high-reliability closed center air valve is online serviceable
- Lube-free operation
- Epoxy-coated air section
- External controller for optional remote operation

#### Typical Applications

- Tank transfer
- Tank stripping
- Chemical tank plating
- Transferring high temperature acids and gases

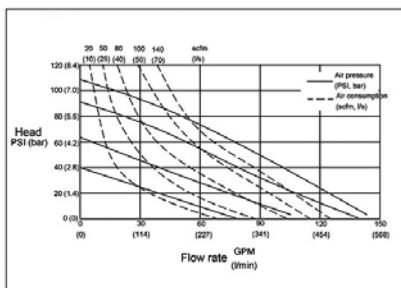
#### Typical Fluids Handled

- Chemicals
- Corrosive fluids
- Acids and gases: acetic, chromic, hydrochloric, hydrofluoric, sulfuric, nitric and phosphoric

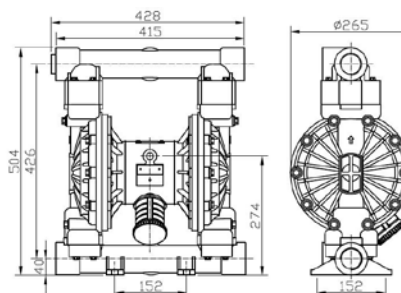
### Parameter Table

MBV40 (PVDF) Plastic Center Block Pump - Technical Specifications	
Max Working Pressure	120psi(0.84Mpa ,8.4bar)
Max Flow Rate	118 gpm(446 lpm)
Max Reciprocating Speed	200cpm
Max Suction Height (Dry Sucking)	5m
Max Permitted Grain	5mm
Max. Air Consumption	80scfm(40L/s)
Air Inlet size	1/2 in.npt(f)
Air Outlet size	1/2 in.npt(f)
Fluid Inlet size	1 1/2 in.npt(f)
Fluid Outlet size	1 1/2 in.npt(f)
Weight	PVDF pump 20.0kg PP pump 16.0kg

### Diagram



### Installation



# MBV40 Plastic Center Block Pump

## Plastic Center Block Pump



Hot MBV40 Plastic Center Block Pump – Emoclew America is the best MBV40 Plastic Center Block Pump supplier in USA.

### Description

#### Features

- 1-1/2 in (38.1 mm) end-porting
- High flow – 100 gpm (378 lpm) in a compact, portable size
- Fluid pressure to 120 psi (8.4 bar, 0.84 MPa)
- Patented, high-reliability closed center air valve is online serviceable
- Lube-free operation
- Epoxy-coated air section
- External controller for optional remote operation

#### Typical Applications

- Tank transfer
- Tank stripping
- Chemical tank plating
- Transferring high temperature acids and gases

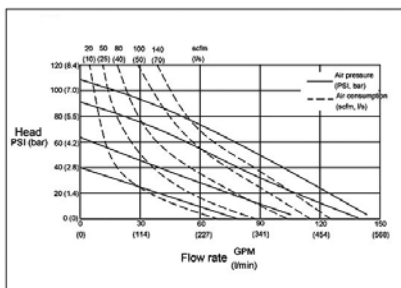
#### Typical Fluids Handled

- Chemicals
- Corrosive fluids
- Acids and gases: acetic, chromic, hydrochloric, hydrofluoric, sulfuric, nitric and phosphoric

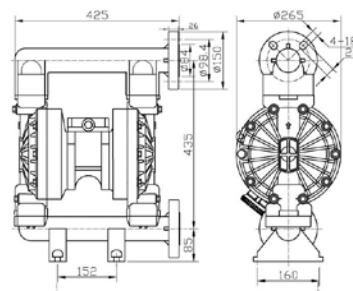
### Parameter Table

MBV40 Plastic Center Block Pump - Technical Specifications	
Max Working Pressure	120psi(0.84Mpa ,8.4bar)
Max Flow Rate	118 gpm(446 lpm)
Max Reciprocating Speed	200cpm
Max Suction Height (Dry Sucking)	5m
Max Permitted Grain	5mm
Max. Air Consumption	80scfm(40L/s)
Air Inlet size	1/2 in.npt(f)
Air Outlet size	1/2 in.npt(f)
Fluid Inlet size	1 1/2 in.npt(f)
Fluid Outlet size	1 1/2 in.npt(f)
Weight	PVDF pump 20.0kg PP pump 16.0kg

### Diagram



### Installation



# MBV40 PP Plastic Center Block Pump

## Plastic Center Block Pump



You can buy good quality MBV40 PP Plastic Center Block Pump, we are the best distributor from USA market.

## Description

### Features

- 1-1/2 in (38.1 mm) end-porting
- High flow – 100 gpm (378 lpm) in a compact, portable size
- Fluid pressure to 120 psi (8.4 bar, 0.84 MPa)
- Patented, high-reliability closed center air valve is online serviceable
- Lube-free operation
- Epoxy-coated air section
- External controller for optional remote operation

### Typical Applications

- Tank transfer
- Tank stripping
- Chemical tank plating
- Transferring high temperature acids and gases

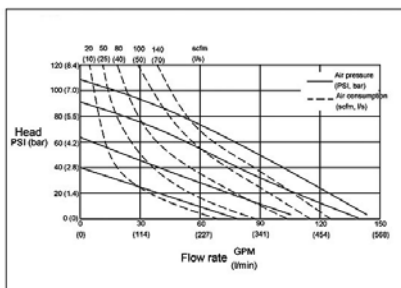
### Typical Fluids Handled

- Chemicals
- Corrosive fluids
- Acids and gases: acetic, chromic, hydrochloric, hydrofluoric, sulfuric, nitric and phosphoric

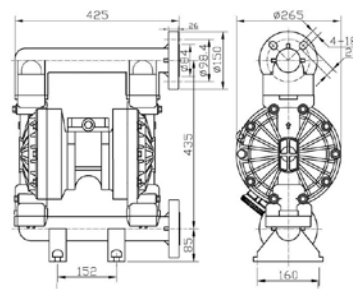
## Parameter Table

MBV40 PP Plastic Center Block Pump - Technical Specifications	
Max Working Pressure	120psi(0.84Mpa ,8.4bar)
Max Flow Rate	118 gpm(446 lpm)
Max Reciprocating Speed	200cpm
Max Suction Height (Dry Sucking)	5m
Max Permitted Grain	5mm
Max. Air Consumption	80scfm(40L/s)
Air Inlet size	1/2 in.npt(f)
Air Outlet size	1/2 in.npt(f)
Fluid Inlet size	1 1/2 in.npt(f)
Fluid Outlet size	1 1/2 in.npt(f)
Weight	PVDF pump 20.0kg PP pump 16.0kg

## Diagram



## Installation



# MBV40 PVDF Plastic Center Block Pump

## Plastic Center Block Pump

You can buy good quality MBV40 PVDF Plastic Center Block Pump, we are the best distributor from USA market



## Description

### Features

- 1-1/2 in (38.1 mm) end-porting
- High flow – 100 gpm (378 lpm) in a compact, portable size
- Fluid pressure to 120 psi (8.4 bar, 0.84 MPa)
- Patented, high-reliability closed center air valve is online serviceable
- Lube-free operation
- Epoxy-coated air section
- External controller for optional remote operation

### Typical Applications

- Tank transfer
- Tank stripping
- Chemical tank plating
- Transferring high temperature acids and gases

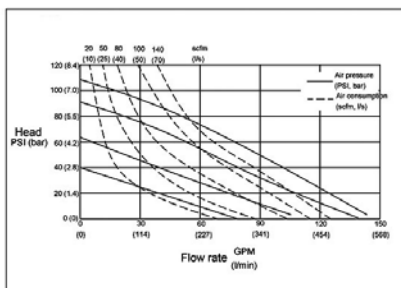
### Typical Fluids Handled

- Chemicals
- Corrosive fluids
- Acids and gases: acetic, chromic, hydrochloric, hydrofluoric, sulfuric, nitric and phosphoric

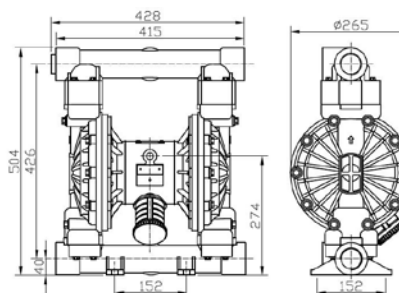
## Parameter Table

MBV40 PVDF Plastic Center Block Pump - Technical Specifications	
Max Working Pressure	120psi(0.84Mpa ,8.4bar)
Max Flow Rate	118 gpm(446 lpm)
Max Reciprocating Speed	200cpm
Max Suction Height (Dry Sucking)	5m
Max Permitted Grain	5mm
Max. Air Consumption	80scfm(40L/s)
Air Inlet size	1/2 in.npt(f)
Air Outlet size	1/2 in.npt(f)
Fluid Inlet size	1 1/2 in.npt(f)
Fluid Outlet size	1 1/2 in.npt(f)
Weight	PVDF pump 20.0kg PP pump 16.0kg

## Diagram



## Installation







# MBV50 PVDF Plastic Center Block Pump

## Plastic Center Block Pump

Quality MBV50 PVDF Plastic Center Block Pump suppliers & exporter – all products made in USA.



## Description

### Features

- 2 in (50.8 mm) ANSI end-porting
- Larger ports for more flow — up to 150 gpm (568 lpm)
- Fluid pressure up to 120 psi (8.4 bar, 0.84 MPa)
- Patented, high-reliability closed center air valve is online serviceable
- Lube-free operation
- Epoxy-coated air section
- External controller for optional remote operation

### Typical Applications

- Drum fluid transfer
- Bulk fluid supply
- Chemical evacuation
- Ground water and sump evacuation
- Waste fluid removal
- Tank and bilge drainage
- Slurry and sludge transfer
- Filter press feed

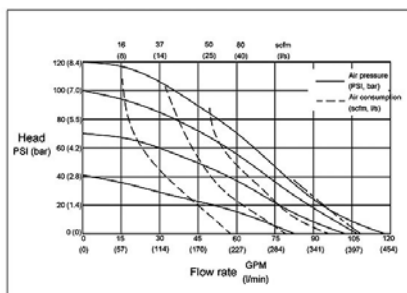
### Typical Fluids Handled

- Acids and gases: acetic, chromic, hydrochloric, Hydrofluoric, sulfuric, nitric and phosphoric
- Ship cleaning and stripping chemicals

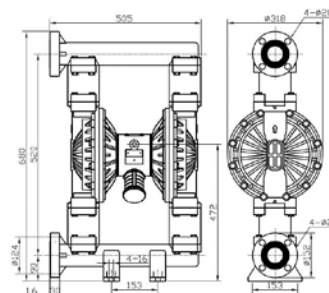
## Parameter Table

MBV50 PVDF Plastic Center Block Pump - Technical Specifications	
Max Working Pressure	120psi(0.84Mpa , 8.4bar)
Max Flow Rate	150 gpm(570 lpm)
Max Reciprocating Speed	145cpm
Max Suction Height (Dry Suction)	5m
Max Permitted Grain	6mm
Max. Air Consumption	140scfm(70L/s)
Air Inlet size	1/2 in.npt(f)
Air Outlet size	1/2 in.npt(f)
Fluid Inlet size	2 in.npt(f)
Fluid Outlet size	2 in.npt(f)
Weight	PVDF Pump 30.5kg

## Diagram



## Installation



# MBV80 PP Plastic Center Block Pump

## Plastic Center Block Pump



Quality MBV80 PP Plastic Center Block Pump suppliers & exporter – all products made in USA.

## Description

### Features

- 3 in (76.2 mm) ANSI center-porting that is internally threaded 3 npt or bspt
- Bolted leak-free, flanged connections — no clamp bands used
- Large flow paths for high viscosities
- Easy air valve maintenance
- Heavy-duty construction
- Fluid flow up to 275 gpm (1040 lpm)

### Typical Applications

- Chemical transfers
- Filter press-feed
- Dewatering

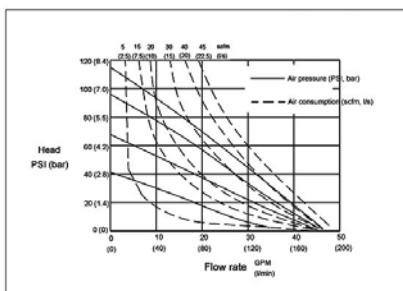
### Typical Fluids Handled

- Chemicals
- Bulk paint resins
- Ceramic slip

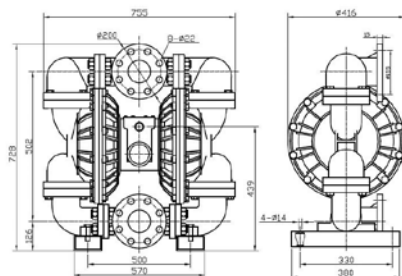
## Parameter Table

MBV80 PP Plastic Center Block Pump - Technical Specifications	
Max Working Pressure	120psi(0.84Mpa ,8.4bar)
Max Flow Rate	275 gpm(1041 lpm)
Max reciprocating Speed	135cpm
Max.Suction Height (Dry Sucking)	5m
Max.permitted Grain	9.4mm
Max Air Consumption	180scfm(90L/s)
Air Inlet size	3/4 in.npt(f)
Air Outlet size	1 in.npt(f)
Fluid Inlet size	3 in.npt(f)
Fluid Outlet size	3 in.npt(f)
Weight	PP pump 66kg

## Diagram



## Installation



# MBV10 Aluminium

## Aluminium Diaphragm Pump



Hot MBV10 Aluminium.  
Emoclew America is the best supplier in USA.

### Description

#### Features

- 3/8 in (9.52 mm) end-porting
- Fully-groundable acetal model
- Delivery up to 7 gpm (26.5 lpm)
- Operates on as little as 12 psi (0.8 bar, 0.08 MPa) air pressure
- Quiet operation

#### Typical Applications

- Drum transfer for fluids up to 1000 centipoise
- Circulation of low viscosity inks, stains and dyes
- Coolant circulation and evacuation
- Waste fluid removal

- On-demand batch chemical metering
- Low viscosity adhesive supply
- Consistent low pressure air spray or HVLP supply

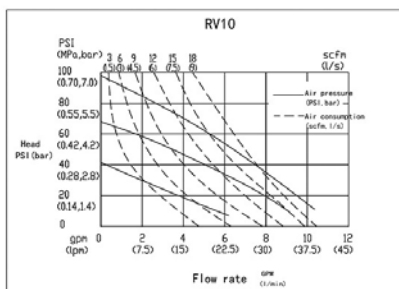
#### Typical Fluids Handled

- Paints
- Lubricants
- Inks
- Stains
- Solvents
- Coatings
- Dyes

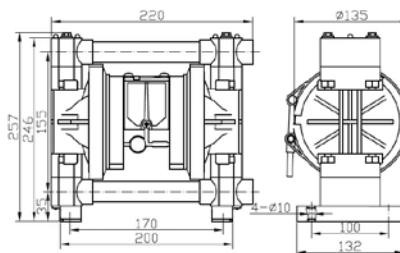
### Parameter Table

MBV10 Aluminium - Technical Specifications	
Max Working Pressure	100psi(0.7Mpa ,7bar)
Max Flow Rate	10.5gpm(38lpm)
Max Reciprocating Speed	330cpm
Max Suction Height (Dry Sucking)	Dry3.7m; Wet6.4m
Max Permitted Grain	1/16in.(1.6mm)
Max.Air Consumption	18scfm(9L/s)
Air Inlet size	1/4in.npt(f)
Air Outlet size	1/4in.npt(f)
Fluid Inlet size	3/8in.npt(f)
Fluid Outlet size	3/8in.npt(f)
Weight	Aluminum pump 3.9kg

### Diagram



### Installation



# MBV15 Aluminium Diaphragm Pump

## Aluminium Diaphragm Pump



As a specialist of MBV15 Aluminium Diaphragm Pump, Emoclew America can offer you comprehensive selections of goods in this industry.

### Description

#### Features

- 1/2 in (12.7 mm) center- and end-porting
- No seals to leak or fail
- Quiet running — less than 85 dB with easy-to-use remote muffler capability for even lower noise levels
- High flow rates in a small, portable package
- External controller for optional remote operation

#### Typical Applications

- Machine lubrication servicing
- Cleaning fluids and detergents
- Plating and dip tanks
- Water treatment

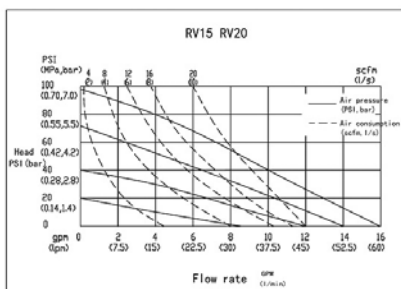
#### Typical Fluids Handled

- Oil
- Water
- Most solvents

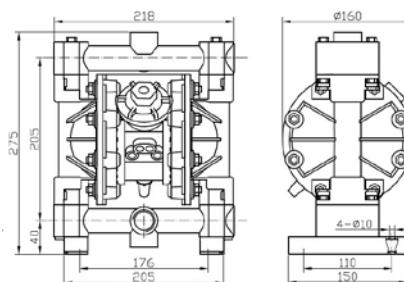
### Parameter Table

MBV15 Aluminium Diaphragm Pump - Technical Specifications	
Max Working Pressure	100psi(0.7Mpa ,7bar)
Max Flow Rate	15gpm(57lpm)
Max Reciprocating Speed	400cpm
Max Suction Height (Dry Sucking)	4.5m
Max Permitted Grain	3/32in.(2.5mm)
Max.Air Consumption	20gpm(10L/s)
Air Inlet size	1/4in.npt(f)
Air Outlet size	3/8in.npt(f)
Fluid Inlet size	1/2 in.npt(f)or bspt(f)
Fluid Outlet size	1/2 in.npt(f)or bspt(f)
Weight	Aluminum pump 4.5kg; Stainless Steel 6.8kg

### Diagram



### Installation



# MBV25 Aluminium Diaphragm Pump

## Aluminium Diaphragm Pump



You can buy good quality MBV25 Aluminium Diaphragm Pump, we are the best distributor from USA market.

### Description

#### Features

- 1 in (25.4 mm) center- and end- porting
- High flow – 40 gpm (151 lpm) in a compact, portable size
- Fluid pressure to 120 psi (8.4 bar, 0.84 MPa)
- Epoxy-coated center section for corrosive environments
- Equipped with an effective and reliable air valve system
- External controller for optional remote operation

#### Typical Applications

- Drum fluid transfer
- Unloading fluids

- Chemical evacuation
- Ceramic glaze supply
- Dewatering and sump evacuation
- Tank and sump drainage

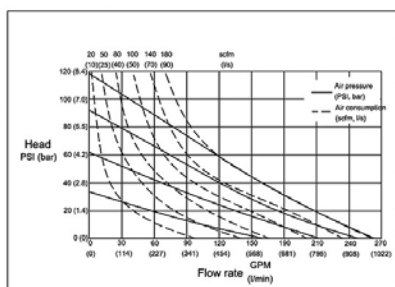
#### Typical Fluids Handled

- Chemicals
- Contaminated surface water
- Adhesives, varnishes, dispersions, solvents and stains
- Resins, latexes, wood preservative stains, concrete paints and primers
- Ceramic slips and slurries

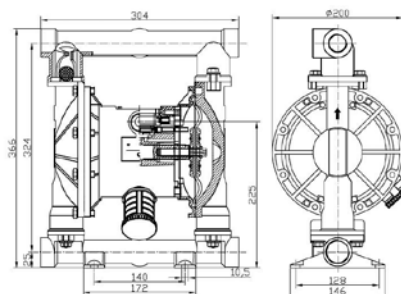
### Parameter Table

MBV25 Aluminium Diaphragm Pump - Technical Specifications	
Max Working Pressure	120psi(0.84Mpa ,8.4bar)
Max Flow Rate	40 gpm(150 lpm)
Max Reciprocating Speed	276cpm
Max Suction Height(Dry Sucking)	5.48m
Max Permitted Grain	4mm
Max.Air Consumption	45scfm(22.5L/s)
Air Inlet size	1/2 in.npt(f)
Air Outlet size	1/2 in.npt(f)
Fluid Inlet size	1 in.npt
Fluid Outlet size	1 in.npt(f)
Weight	Aluminum pump 8.2kg Stainless steel 15kg

### Diagram



### Installation





# MBV40 Aluminium Diaphragm Pump

## Aluminium Diaphragm Pump



As a specialist of MBV40 Aluminium Diaphragm Pump, Emoclew America can offer you comprehensive selections of goods in this industry

### Description

#### Features

- 1-1/2 in (38.1 mm) end-porting
- High flow – 100 gpm (378 lpm) in a compact, portable size
- Fluid pressure to 120 psi (8.4 bar, 0.84 MPa)
- Patented, high-reliability closed center air valve is online serviceable
- Lube-free operation
- Epoxy-coated air section
- External controller for optional remote operation

#### Typical Applications

- Filter press
- Tank stripping
- Bilge pumping
- Sand and ball mill pumping
- Oil transfer and oil skimming
- Chemical plating

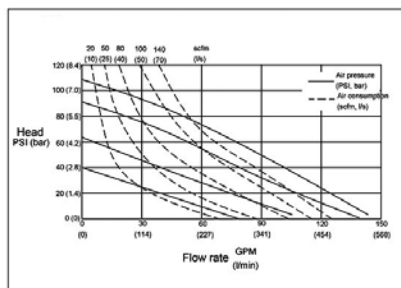
#### Typical Fluids Handled

- Latex
- Abrasive fluids
- Slurries: petroleum, lime, clay, ferrite, salt/brine and pumice
- Sludge: secondary and clarifier
- Pottery slip

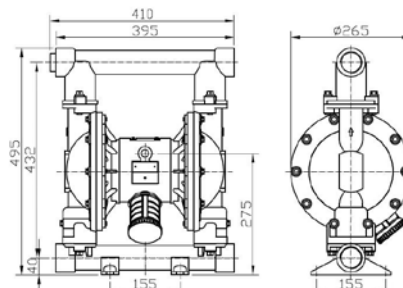
### Parameter Table

MBV40 Aluminium Diaphragm Pump - Technical Specifications	
Max Working Pressure	120psi(0.84Mpa ,8.4bar)
Max Flow Rate	118 gpm(446 lpm)
Max Reciprocating Speed	200cpm
Max Suction Height (Dry Sucking)	5m
Max Permitted Grain	5mm
Max. Air Consumption	80scfm(40L/s)
Air Inlet size	1/2 in.npt(f)
Air Outlet size	1/2 in.npt(f)
Fluid Inlet size	1 1/2 in.npt(f)
Fluid Outlet size	1 1/2 in.npt(f)
Weight	Aluminum pump 16kg; Stainless steel 29.0kg Ductile Iron 33kg

### Diagram



### Installation



# MBV50 Aluminium Diaphragm Pump

## Aluminium Diaphragm Pump

Quality MBV50 Aluminium Diaphragm Pump suppliers & exporter – all products made in USA.



### Description

#### Features

- 2 in (50.8 mm) end-porting
- Larger ports for more flow – up to 150 gpm (568 lpm)
- Fluid pressure up to 120 psi (8.4 bar, 0.84 MPa)
- Patented, high-reliability closed center air valve is online serviceable
- Lube-free operation
- Epoxy-coated air section
- External controller for optional remote operation

#### Typical Applications

- Drum fluid transfer
- Bulk fluid supply
- Chemical evacuation
- Ground water and sump evacuation
- Waste fluid removal
- Tank and bilge drainage
- Slurry and sludge transfer
- Filter press feed

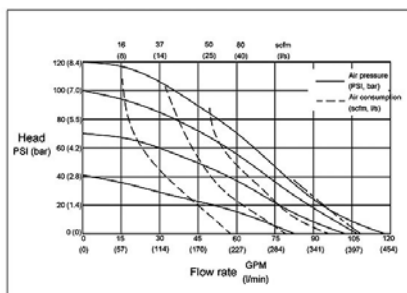
#### Typical Fluids Handled

- Alkalies and solvents
- Suspensions and dispersions
- Solvents, latex paints, varnishes, resins and adhesives
- Sludge and waste water

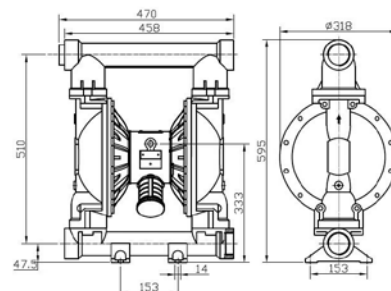
### Parameter Table

MBV50 Aluminium Diaphragm Pump - Technical Specifications	
Max Working Pressure	120psi(0.84Mpa ,8.4bar)
Max Flow Rate	150 gpm(570 lpm)
Max Reciprocating Speed	145cpm
Max Suction Height (Dry Suction)	5m
Max Permitted Grain	6mm
Max. Air Consumption	140scfm(70L/s)
Air Inlet size	1/2 in.npt(f)
Air Outlet size	1/2 in.npt(f)
Fluid Inlet size	2 in.npt(f)
Fluid Outlet size	2 in.npt(f)
Weight	Aluminum pump 29kg ; Stainless steel 47kg; Ductile Iton 66kg

### Diagram



### Installation



# MBV80 Aluminium Diaphragm Pump

## Aluminium Diaphragm Pump



You can buy good quality MBV80 Aluminium Diaphragm Pump, we are the best distributor from USA market.

### Description

#### Features

- 3 in (76.2 mm) ANSI center-porting that is internally threaded 3 npt or bspt
- Bolted leak-free, flanged connections — no clamp bands used
- Large flow paths for high viscosities
- Easy air valve maintenance
- Heavy-duty construction
- Fluid flow up to 275 gpm (1040 lpm)

#### Typical Applications

- Chemical transfers
- Filter press-feed
- Dewatering

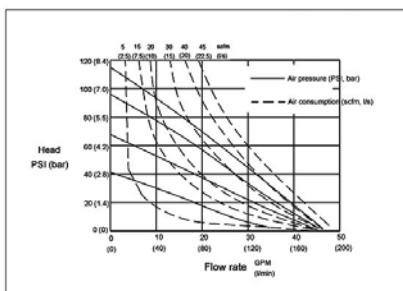
#### Typical Fluids Handled

- Chemicals
- Bulk paint resins
- Ceramic slip

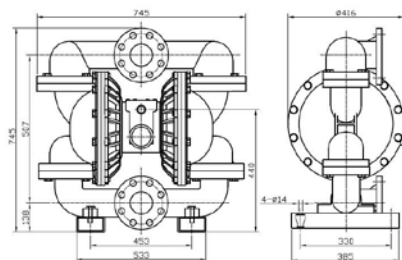
### Parameter Table

MBV80 Aluminium Diaphragm Pump - Technical Specifications	
Max Working Pressure	120psi(0.84Mpa ,8.4bar)
Max Flow Rate	275 gpm(1041 lpm)
Max reciprocating Speed	135cpm
Max.Suction Height (Dry Sucking)	5m
Max.permitted Grain	9.4mm
Max Air Consumption	180scfm(90L/s)
Air Inlet size	3/4 in.npt(f)
Air Outlet size	1 in.npt(f)
Fluid Inlet size	3 in.npt(f)
Fluid Outlet size	3 in.npt(f)
Weight	Aluminum pump 77kg; Stainless steel 110.0kg; Ductile lton 180kg

### Diagram



### Installation



# MBV15 Stainless Steel Center Block Pump

## Stainless Steel Center Block Pump

Emoclew America is the best MBV15 Stainless Steel Center Block Pump manufacturer in USA. Offering quality product to global customers.



## Description

### Features

- 1/2 in (12.7 mm) center- and end-porting
- No seals to leak or fail
- Quiet running — less than 85 dB with easy-to-use remote muffler capability for even lower noise levels
- High flow rates in a small, portable package
- External controller for optional remote operation

### Typical Applications

- Machine lubrication servicing
- Cleaning fluids and detergents
- Plating and dip tanks
- Water treatment

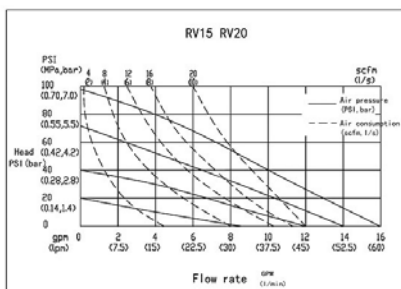
### Typical Fluids Handled

- Oil
- Water
- Most solvents

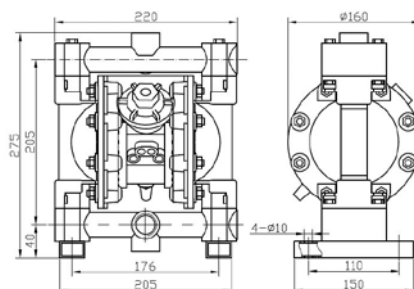
## Parameter Table

MBV15 Stainless Steel Center Block Pump - Technical Specifications	
Max Working Pressure	100psi(0.7Mpa ,7bar)
Max Flow Rate	15gpm(57lpm)
Max Reciprocating Speed	400cpm
Max Suction Height (Dry Sucking)	4.5m
Max Permitted Grain	3/32in.(2.5mm)
Max.Air Consumption	20gpm(10L/s)
Air Inlet size	1/4in.npt(f)
Air Outlet size	3/8in.npt(f)
Fluid Inlet size	1/2 in.npt(f)or bspt(f)
Fluid Outlet size	1/2 in.npt(f)or bspt(f)
Weight	Aluminum pump 4.5kg; Stainless Steel 6.8kg

## Diagram



## Installation



# MBV25 Diaphragm Pump Ductile Iron

**Stainless Steel Center Block Pump**



You can buy good quality MBV25 Diaphragm Pump Ductile Iron, we are the best distributor from USA market.

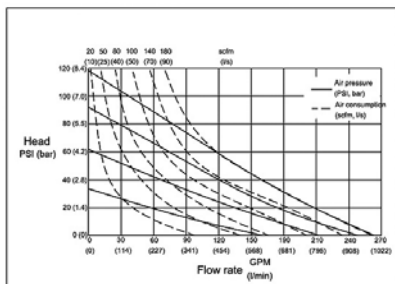
## Description

### Parameter Table

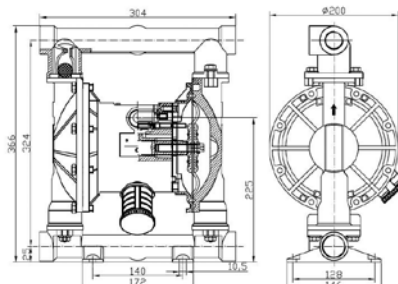
MBV25 Diaphragm Pump - Technical Specifications	
Max Working Pressure	120psi(0.84Mpa ,8.4bar)
Max Flow Rate	40 gpm(150 lpm)
Max Reciprocating Speed	276cpm
Max Suction Height(Dry Sucking)	5.48m
Max Permitted Grain	4mm
Max.Air Consumption	45scfm(22.5L/s)
Air Inlet size	1/2 in.npt(f)
Air Outlet size	1/2 in.npt(f)
Fluid Inlet size	1 in.npt
Fluid Outlet size	1 in.npt(f)
Weight	Aluminum pump 8.2kg Stainless steel 15kg

MBV25 Diaphragm Pump Ductile Iron - Technical Specifications	
Max Working Pressure	100psi(0.7Mpa ,7bar)
Max.Flow .Rate	40 gpm(150 lpm)
Max Reciprocating Speed	276cpm
Max.Suction Height (Dry Sucking)	5m
Max Permitted Grain	4mm
Max Air Consumption	60scfm(1.7m <sup>3</sup> /min)
Air Inlet size	1/2 in.npt(f)
Air outlet size	1/2 in.npt(f)
Fluid Inlet size	1 in.npt
Fluid Outlet size	1 in.npt(f)
Weight	Aluminum Pump 8.2kg Stainless steel Pump 15kg

## Diagram



## Installation



# MBV25 Stainless Full Steel Center Block Pump

## Stainless Steel Center Block Pump

As a specialist of MBV25 Stainless Full Steel Center Block Pump, Emoclew America can offer you comprehensive selections of goods in this industry.



## Description

### Features

- 1 in (25.4 mm) center- and end-ported
- High flow – 40 gpm (151 lpm) in a compact, portable size
- Fluid pressure to 120 psi (8.4 bar, 0.84 MPa)
- Epoxy-coated center section for corrosive environments
- Equipped with an effective and reliable air valve system
- External controller for optional remote operation
- Stainless steel center section for corrosive applications

### Typical Applications

- Moving very flowable materials
- Evacuating food process mixing kettles
- Transferring ingredients from original containers to mixing tanks
- Evacuating liquid concentrates from shipping tankers to holding vessels

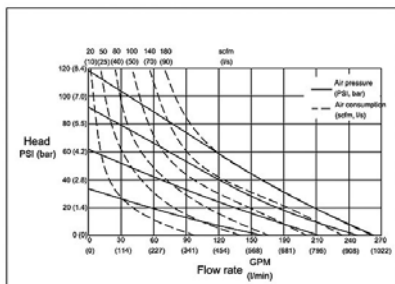
### Typical Fluids Handled

- Fruit juice
- Sauce
- Wine
- Oil
- Pureed fruit
- Pastes and starches
- Corn syrup
- Mineral oil
- Lanolin alcohol
- Glycol

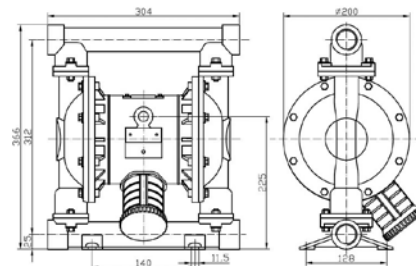
## Parameter Table

MBV25 Stainless Full Steel Center Block Pump - Technical Specifications	
Max Working Pressure	100psi(0.7Mpa ,7bar)
Max Flow Rate	40 gpm(150 lpm)
Max Reciprocating Speed	276cpm
Max.Suction Height (Dry Sucking)	5m
Max Permitted Grain	4mm
Aax Air Consumption	60scfm(1.7m <sup>3</sup> /min)
Air Inlet size	1/2 in.npt(f)
Air Outlet size	1/2 in.npt(f)
Fluid Inlet size	1 in.npt
Fluid Outlet size	1 in.npt(f)
Weight	Aluminum pump 8.2kg Stainless steel pump 15kg

## Diagram



## Installation





# MBV25 Stainless Steel Center Block Pump

## Stainless Steel Center Block Pump

Quality MBV25 Stainless Steel Center Block Pump suppliers & exporter – all products made in USA.



### Description

#### Features

- 1 in (25.4 mm) center- and end- porting
- High flow – 40 gpm (151 lpm) in a compact, portable size
- Fluid pressure to 120 psi (8.4 bar, 0.84 MPa)
- Epoxy-coated center section for corrosive environments
- Equipped with an effective and reliable air valve system
- External controller for optional remote operation

#### Typical Applications

- Drum fluid transfer
- Unloading fluids

- Chemical evacuation
- Ceramic glaze supply
- Dewatering and sump evacuation
- Tank and sump drainage

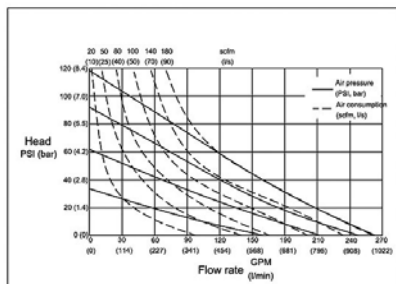
#### Typical Fluids Handled

- Chemicals
- Contaminated surface water
- Adhesives, varnishes, dispersions, solvents and stains
- Resins, latexes, wood preservative stains, concrete paints and primers
- Ceramic slips and slurries

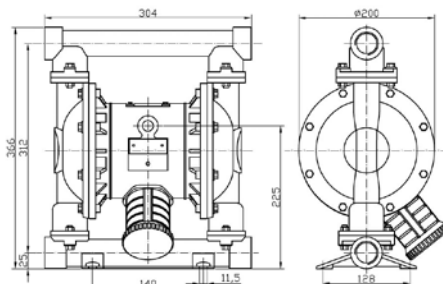
### Parameter Table

MBV25 Stainless Steel Center Block Pump - Technical Specifications	
Max Working Pressure	120psi(0.84Mpa ,8.4bar)
Max Flow Rate	40 gpm(150 lpm)
Max Reciprocating Speed	276cpm
Max Suction Height(Dry Sucking)	5.48m
Max Permitted Grain	4mm
Max.Air Consumption	45scfm(22.5L/s)
Air Inlet size	1/2 in.npt(f)
Air Outlet size	1/2 in.npt(f)
Fluid Inlet size	1 in.npt
Fluid Outlet size	1 in.npt(f)
Weight	Aluminum pump 8.2kg Stainless steel 15kg

### Diagram



### Installation



# MBV40 Diaphragm Pump Ductile Iron

## Stainless Steel Center Block Pump



Quality MBV40 Diaphragm Pump Ductile Iron suppliers & exporter – all products made in USA.

### Description

#### Features

- 1-1/2 in (38.1 mm) end-ported
- High flow – 100 gpm (378 lpm) in a compact, portable size
- Fluid pressure to 120 psi (8.4 bar, 0.84 MPa)
- Patented, high-reliability closed center air valve is online serviceable
- Lube-free operation
- Epoxy-coated air section
- External controller for optional remote operation

#### Typical Applications

- Filter press
- Tank stripping
- Bilge pumping
- Sand and ball mill pumping
- Oil transfer and oil skimming
- Chemical plating

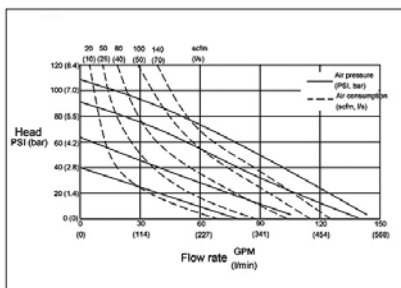
#### Typical Fluids Handled

- Latex
- Abrasive fluids
- Slurries: petroleum, lime, clay, ferrite, salt/brine and pumice
- Sludge: secondary and clarifier
- Pottery slip

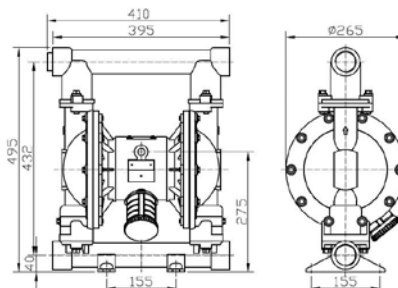
### Parameter Table

MBV40 Diaphragm Pump Ductile Iron - Technical Specifications	
Max Working Pressure	120psi(0.84Mpa ,8.4bar)
Max Flow Rate	118 gpm(446 lpm)
Max Reciprocating Speed	200cpm
Max Suction Height (Dry Sucking)	5m
Max Permitted Grain	5mm
Max. Air Consumption	80scfm(40L/s)
Air Inlet size	1/2 in.npt(f)
Air Outlet size	1/2 in.npt(f)
Fluid Inlet size	1 1/2 in.npt(f)
Fluid Outlet size	1 1/2 in.npt(f)
Weight	Aluminum pump 16kg; Stainless steel 29.0kg Ductile Iron 33kg

### Diagram



### Installation



# MBV40 Stainless Full Steel Center Block Pump

## Stainless Steel Center Block Pump

You can buy good quality MBV40 Stainless Full Steel Center Block Pump, we are the best distributor from USA market.



## Description

### Features

- 1-1/2 in (38.1 mm) end-ported
- High flow – 100 gpm (378 lpm) in a compact, portable size
- Fluid pressure to 120 psi (8.4 bar, 0.84 MPa)
- Patented, high-reliability closed center air valve is online serviceable
- Lube-free operation
- Epoxy-coated air section
- External controller for optional remote operation
- Stainless steel center section for corrosive applications

### Typical Applications

- Moving fluids ranging from slow moving to very flowable
- Evacuating food process mixing kettles
- Transferring of ingredients from original containers to mixing tanks
- Evacuating liquid concentrates from shipping tankers to holding vessels
- Repackaging fluids from original containers to smaller receptacles

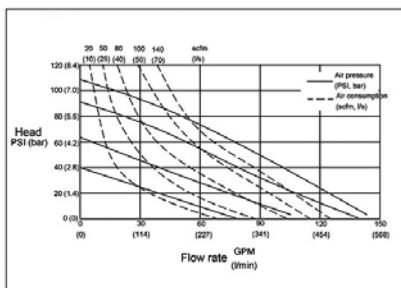
### Typical Fluids Handled

- Concentrated fruit juice
- Pizza paste
- Wine
- Oil
- Jams & jellies
- Pastes and starches
- Corn syrup
- Mineral oil
- Lanolin alcohol
- Glycol
- Pudding
- Chocolate

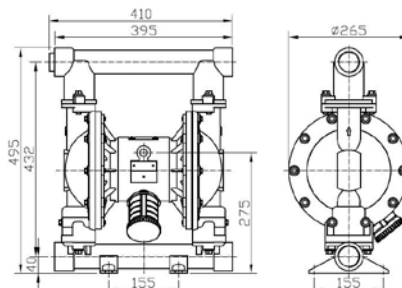
## Parameter Table

MBV40 Stainless Full Steel Center Block Pump - Technical Specifications	
Max Working Pressure	100psi(0.7Mpa , 7bar)
Max .flow Rate	90 gpm(340 lpm)
Max Reciprocating Speed	200cpm
Max.Suction Height (Dry Sucking)	5m
Max Permitted Grain	5mm
Max Air Consumption	125scfm(3.5m³/min)
Air Inlet size	1/2 in.npt(f)
Air Outlet size	1/2 in.npt(f)
Fluid Inlet size	1 1/2 in.npt(f)
Fluid Outlet Size	1 1/2 in.npt(f)
Weight	Stainless steel pump 29.0kg Aluminum pump 16.0kg

## Diagram



## Installation



# MBV40 Stainless Steel Center Block Pump

## Stainless Steel Center Block Pump



As a specialist of MBV40 Stainless Steel Center Block Pump, Emoclew America can offer you comprehensive selections of goods in this industry.

### Description

#### Features

- 1-1/2 in (38.1 mm) end-ported
- High flow – 100 gpm (378 lpm) in a compact, portable size
- Fluid pressure to 120 psi (8.4 bar, 0.84 MPa)
- Patented, high-reliability closed center air valve is online serviceable
- Lube-free operation
- Epoxy-coated air section
- External controller for optional remote operation

#### Typical Applications

- Filter press
- Tank stripping
- Bilge pumping
- Sand and ball mill pumping
- Oil transfer and oil skimming
- Chemical plating

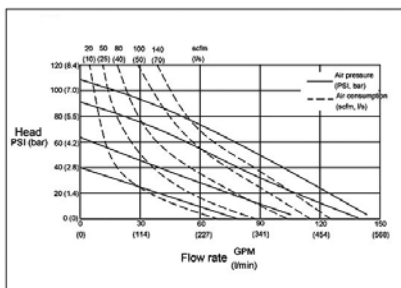
#### Typical Fluids Handled

- Latex
- Abrasive fluids
- Slurries: petroleum, lime, clay, ferrite, salt/brine and pumice
- Sludge: secondary and clarifier
- Pottery slip

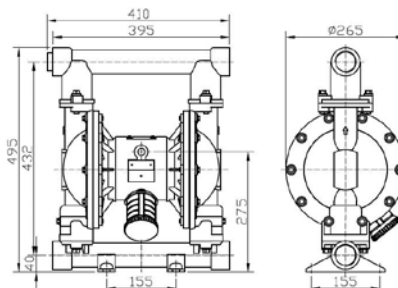
### Parameter Table

MBV40 Stainless Steel Center Block Pump - Technical Specifications	
Max Working Pressure	120psi(0.84Mpa ,8.4bar)
Max Flow Rate	118 gpm(446 lpm)
Max Reciprocating Speed	200cpm
Max Suction Height (Dry Sucking)	5m
Max Permitted Grain	5mm
Max. Air Consumption	80scfm(40L/s)
Air Inlet size	1/2 in.npt(f)
Air Outlet size	1/2 in.npt(f)
Fluid Inlet size	1 1/2 in.npt(f)
Fluid Outlet size	1 1/2 in.npt(f)
Weight	Aluminum pump 16kg; Stainless steel 29.0kg Ductile Iton 33kg

### Diagram



### Installation



# MBV50 Diaphragm Pump Ductile Iron

## Stainless Steel Center Block Pump



Hot MBV50 Diaphragm Pump Ductile Iron – Emoclew America is the best MBV50 Diaphragm Pump Ductile Iron supplier in USA.

### Description

#### Features

- 2 in (50.8 mm) end-porting
- Larger ports for more flow – up to 150 gpm (568 lpm)
- Fluid pressure up to 120 psi (8.4 bar, 0.84 MPa)
- Patented, high-reliability closed center air valve is online serviceable
- Lube-free operation
- Epoxy-coated air section
- External controller for optional remote operation

#### Typical Applications

- Drum fluid transfer
- Bulk fluid supply
- Chemical evacuation
- Ground water and sump evacuation
- Waste fluid removal
- Tank and bilge drainage
- Slurry and sludge transfer
- Filter press feed

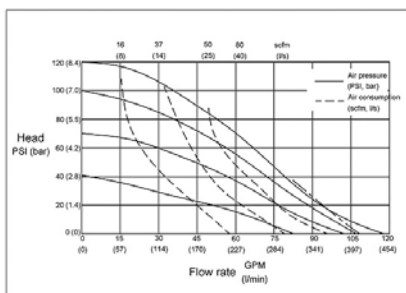
#### Typical Fluids Handled

- Alkalies and solvents
- Suspensions and dispersions
- Solvents, latex paints, varnishes, resins and adhesives
- Sludge and waste water

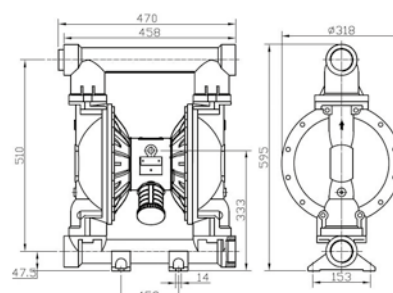
### Parameter Table

Rv50 Diaphragm Pump - Technical Specifications	
Max Working Pressure	120psi(0.84Mpa ,8.4bar)
Max Flow Rate	150 gpm(570 lpm)
Max Reciprocating Speed	145cpm
Max Suction Height (Dry Suction)	5m
Max Permitted Grain	6mm
Max. Air Consumption	140scfm(70L/s)
Air Inlet size	1/2 in.npt(f)
Air Outlet size	1/2 in.npt(f)
Fluid Inlet size	2 in.npt(f)
Fluid Outlet size	2 in.npt(f)
Weight	Aluminum pump 29kg ; Stainless steel 47kg; Ductile Iton 66kg

### Diagram



### Installation



# MBV50 Stainless Full Steel Center Block Pump

## Stainless Steel Center Block Pump



Hot MBV50 Stainless Full Steel Center Block Pump – Emoclew America is the best MBV50 Stainless Full Steel Center Block Pump supplier in USA.

### Description

#### Features

- 2 in (50.8 mm) end-porting
- Larger ports for more flow – up to 150 gpm (568 lpm)
- Fluid pressure up to 120 psi (8.4 bar, 0.84 MPa)
- Patented, high-reliability closed center air valve is online serviceable
- Lube-free operation
- Epoxy-coated air section
- External controller for optional remote operation

#### Typical Applications

- Moving fluids ranging from very slow moving to very flowable
- Evacuating food process mixing kettles
- Transferring ingredients from original containers to mixing tanks
- Evacuating liquid concentrates from shipping tankers to holding vessels

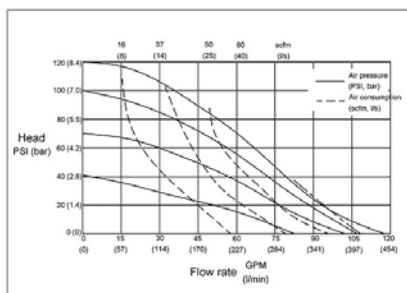
#### Typical Fluids Handled

- Concentrated fruit juice
- Tomato paste
- Wine
- Oil
- Jams & jellies
- Pastes and starches
- Corn syrup
- Glycol
- Thick sauce
- Pudding
- Chocolate
- Fruit filling

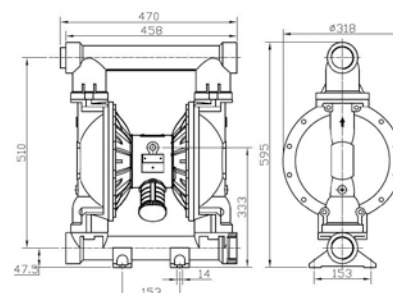
### Parameter Table

MBV50 Stainless Full Steel Center Block Pump - Technical Specifications	
Max Working Pressure	100psi(0.7Mpa ,7bar)
Max Flow Rate	150 gpm(570 lpm)
Max Reciprocating Speed	145cpm
Max Suction Height (Dry Sucking)	5m
Max Permitted Grain	6mm
Max Air Consumption	175scfm(4.9m <sup>3</sup> /min)
Air Inlet size	1/2 in.npt(f)
Air Outlet size	1/2 in.npt(f)
Fluid Inlet size	2in.npt(f)
Fluid Outlet size	2in.npt(f)
Weight	Aluminum Pump 29.0kg Stainless Steel Pump 47.0kg

### Diagram



### Installation



# MBV50 Stainless Steel Center Block Pump

## Stainless Steel Center Block Pump



As a specialist of MBV50 Stainless Steel Center Block Pump, Emoclew America can offer you comprehensive selections of goods in this industry.

## Description

### Features

- 2 in (50.8 mm) end-porting
- Larger ports for more flow – up to 150 gpm (568 lpm)
- Fluid pressure up to 120 psi (8.4 bar, 0.84 MPa)
- Patented, high-reliability closed center air valve is online serviceable
- Lube-free operation
- Epoxy-coated air section
- External controller for optional remote operation

### Typical Applications

- Drum fluid transfer
- Bulk fluid supply
- Chemical evacuation
- Ground water and sump evacuation
- Waste fluid removal
- Tank and bilge drainage
- Slurry and sludge transfer
- Filter press feed

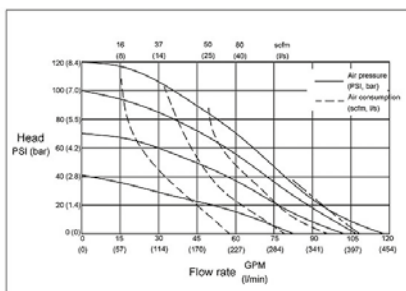
### Typical Fluids Handled

- Alkalies and solvents
- Suspensions and dispersions
- Solvents, latex paints, varnishes, resins and adhesives
- Sludge and waste water

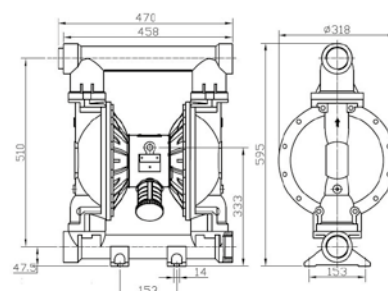
## Parameter Table

MBV50 Stainless Steel Center Block Pump - Technical Specifications	
Max Working Pressure	120psi(0.84Mpa ,8.4bar)
Max Flow Rate	150 gpm(570 lpm)
Max Reciprocating Speed	145cpm
Max Suction Height (Dry Suction)	5m
Max Permitted Grain	6mm
Max. Air Consumption	140scfm(70L/s)
Air Inlet size	1/2 in.npt(f)
Air Outlet size	1/2 in.npt(f)
Fluid Inlet size	2 in.npt(f)
Fluid Outlet size	2 in.npt(f)
Weight	Aluminum pump 29kg ; Stainless steel 47kg; Ductile Iton 66kg

## Diagram



## Installation





# MBV80 Diaphragm Pump Ductile Iron

## Stainless Steel Center Block Pump



As a specialist of MBV80 Diaphragm Pump Ductile Iron, Emoclew America can offer you comprehensive selections of goods in this industry.

### Description

#### Features

- 3 in (76.2 mm) ANSI center-porting that is internally threaded 3 npt or bspt
- Bolted leak-free, flanged connections — no clamp bands used
- Large flow paths for high viscosities
- Easy air valve maintenance
- Heavy-duty construction
- Fluid flow up to 275 gpm (1040 lpm)

#### Typical Applications

- Chemical transfers
- Filter press-feed
- Dewatering

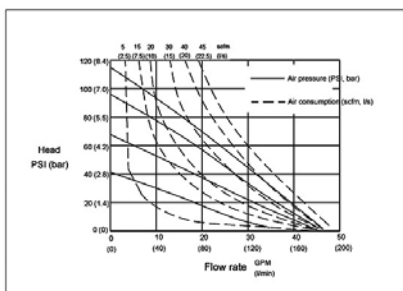
#### Typical Fluids Handled

- Chemicals
- Bulk paint resins
- Ceramic slip

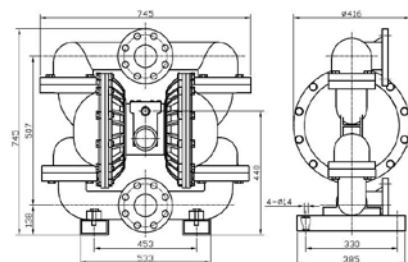
### Parameter Table

MBV80 Diaphragm Pump Ductile Iron - Technical Specifications	
Max Working Pressure	120psi(0.84Mpa ,8.4bar)
Max Flow Rate	275 gpm(1041 lpm)
Max reciprocating Speed	135cpm
Max.Suction Height (Dry Sucking)	5m
Max.permitted Grain	9.4mm
Max Air Consumption	180scfm(90L/s)
Air Inlet size	3/4 in.npt(f)
Air Outlet size	1 in.npt(f)
Fluid Inlet size	3 in.npt(f)
Fluid Outlet size	3 in.npt(f)
Weight	Aluminum pump 77kg; Stainless steel 110.0kg; Ductile Iron 180kg

### Diagram



### Installation



# MBV80 Diaphragm Pump Stainless Steel

## Stainless Steel Center Block Pump



Emoclew America is the best MBV80 Diaphragm Pump Stainless Steel manufacturer in USA. Offering quality product to global customers.

### Description

#### Features

- 3 in (76.2 mm) ANSI center-porting that is internally threaded 3 npt or bspt
- Bolted leak-free, flanged connections — no clamp bands used
- Large flow paths for high viscosities
- Easy air valve maintenance
- Heavy-duty construction
- Fluid flow up to 275 gpm (1040 lpm)

#### Typical Applications

- Chemical transfers
- Filter press-feed
- Dewatering

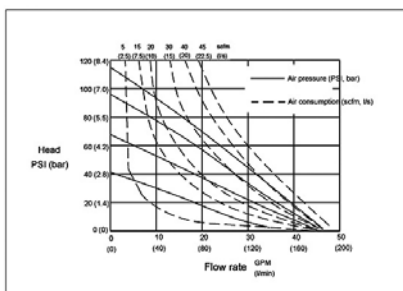
#### Typical Fluids Handled

- Chemicals
- Bulk paint resins
- Ceramic slip

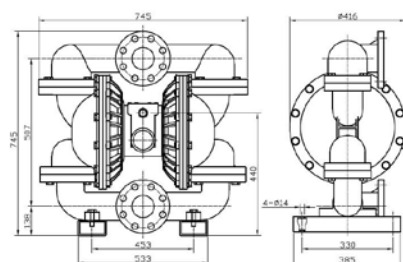
### Parameter Table

MBV80 Diaphragm Pump Stainless Steel - Technical Specifications	
Max Working Pressure	120psi(0.84Mpa ,8.4bar)
Max Flow Rate	275 gpm(1041 lpm)
Max reciprocating Speed	135cpm
Max.Suction Height (Dry Sucking)	5m
Max.permitted Grain	9.4mm
Max Air Consumption	180scfm(90L/s)
Air Inlet size	3/4 in.npt(f)
Air Outlet size	1 in.npt(f)
Fluid Inlet size	3 in.npt(f)
Fluid Outlet size	3 in.npt(f)
Weight	Aluminum pump 77kg; Stainless steel 110.0kg; Ductile Iton 180kg

### Diagram



### Installation



# Spare Parts of MBV

## Spare Parts

**Emoclew America**, as one of the leading such manufacturers and suppliers, is professional in diaphragm metering pumps and spare parts. Don't hesitate to buy our products. We will do our best to meet your requirement.

### Description

#### MBV Air Motor Kit

Air Motor Kit Of MBV Mainly includes: Air valve cover gasket, Central Axis V-ring, Commutation Pin O-ring, Commutation Switch, Piston, Piston V-ring, SST air guide block gasket, Air valve cover gasket, .Commutation pin coat, Central axis coat, Piston coat, Air guided Switch o-ring, Air guided Switch.

- Air Guided Switch O-Ring
- Air Valve Cover Gasket
- Central Axis Coat
- Central Axis V-Ring
- Commutation Pin
- Commutation Pin Coat
- Commutation Pin O-Ring
- Commutation Switch Piston
- Piston Coat Piston
- V-Ring SST Air
- Guided Block Gasket

#### MBV Ball

Our company has ceramic ball, PTFE ball, viton ball, santoprene ball, Buna-N ball, Hytrel ball, our ball suitable for neutral fluid, water, oil, weak acid, Corrosive and abrasive Fluids

The ball has good appearance and has long service life  
Ceramic ball suitable for strong acid and alkali, chemical liquids and slurry of higher viscosity and strength.

Teflon ball suitable for strong acid and alkali and other chemical liquids of high flow ability

Rubber ball suitable for waste water, waste oil

Stainless steel ball suitable for slurry of higher viscosity and strength ceramic slurry ,paint and ect.

- All Material Ball
- Buna-N Ball
- Ceramic Ball
- Hytrel Ball
- Stainless Steel Ball
- Teflon Ball Viton Ball

#### MBV Ball Seat

Our company has stainless steel seat, hytrel seat, PTFE seat, Santoprene seat, They are suitable for waste water treatment industry, chemical industry ect. The Ball Seat has good appearance and has long service life

PTFE seat suitable for strong acid and alkali chemical materials.  
Viton seat suitable for acid and alkali liquids ,with good sealing performance ,including oil resistant fluorine rubber and temperature resistant fluorine rubber.

Neoprene rubber seat suitable for slight acid and alkali liquids.

Buna-N seat suitable for transporting oily materials.

- All Material Ball
- Hytrel Seat
- PP Seat
- Santoprene Seat
- Stainless Steel Seat
- Teflon Seat



#### MBV Diaphragm

Our company has Buna-N Diaphragm ,Viton diaphragm ,EPDM Diaphragm Teflon Diaphragm ,Hytrel Diaphragm and so on . The Diaphragm suitable for paint industry , Petrochemical industry chemical industry ect.

Our diaphragm all imported and has long service life

Buna-N Diaphragm suitable for transporting oily materials ,with good fatigue strength

Neoprene Rubber Diaphragm suitable for slight acid and alkali liquids ,conveying slurry ,waste water and ect.

Viton Diaphragm suitable for acid and alkali chemical materials and liquids of higher temperature.

EPDM Diaphragm suitable for slight and alkali liquids with aging resistance

Teflon Diaphragm suitable for strong acid and alkali chemical materials, to be used together with rubber diaphragm

Hytrel diaphragm good anti -abrasion ,can replace Buna-N, Apply to the majority of the neutral

- All-Material-Diaphragm
- Buna-N-Diaphragm
- EPDM-Diaphragm
- Hytrel-Diaphragm
- Polyurethane-Diaphragm
- Santoprene-Diaphragm
- Teflon-Diaphragm
- Viton-Diaphragm

#### MBV O-Ring

Our company has Viton O-ring ,PTFE O-Ring ,Teflon O-ring ,The O-Ring suitable for strong Acid ,strong Alkali, and water -based paint, Our O-ring has good appearance and has long service life

Viton O-Ring suitable for acid and alkali

PTFE O-Ring suitable for strong acid and alkali chemical materials  
Teflon capsuled O-ring suitable for corrosive and abrasive Fluids

- All Material O-Ring
- PTFE O-Ring
- RVF O-Ring
- Teflon Capsuled O-Ring
- Viton O-Ring

#### MBV Other Spare Parts

Other Spare Parts Of RV Mainly includes: Funnel Ball Valve, Solenoid Valve And FRL, Silencer, Buffer.

- Buffer
- Funnel Ball Valve
- Silencer
- Solenoid Valve And FRL

## Spare Parts of GRACO

### Spare Parts



### Description

#### GRACO Ball

Ceramic ball suitable for strong acid and alkali, chemical liquids and slurry of higher viscosity and strength.  
Teflon ball suitable for strong acid and alkali and other chemical liquids of high flow ability  
Rubber ball suitable for waste water, waste oil  
Stainless steel ball suitable for slurry of higher viscosity and strength ceramic slurry, paint and ect.

#### GRACO Ball Seat

PTFE seat suitable for strong acid and alkali chemical materials.  
Viton seat suitable for acid and alkali liquids ,with good sealing performance ,including oil resistant fluorine rubber and temperature resistant fluorine rubber.  
Neoprene rubber seat suitable for slight acid and alkali liquids.  
Buna-N seat suitable for transporting oily materials.

#### GRACO Diaphragm

Buna-N Diaphragm suitable for transporting oily materials, with good fatigue strength  
Neoprene Rubber Diaphragm suitable for slight acid and alkali liquids, conveying slurry ,waste water and ect.  
Viton Diaphragm suitable for acid and alkali chemical materials and liquids of higher temperature.  
EPDM Diaphragm suitable for slight and alkali liquids with aging resistance  
Teflon Diaphragm suitable for strong acid and alkali chemical materials, to be used together with rubber diaphragm  
Hytrel diaphragm good anti-abrasion, can replace Buna-N, Apply to the majority of the neutral

#### GRACO O-ring

Viton O-Ring suitable for acid and alkali  
PTFE O-Ring suitable for strong acid and alkali chemical materials  
Teflon capsuled O-ring suitable for corrosive and abrasive Fluids

## Spare Parts of ARO

### Spare Parts



### Description

#### ARO Ball

Ceramic ball suitable for strong acid and alkali, chemical liquids and slurry of higher viscosity and strength .  
Teflon ball suitable for strong acid and alkali and other chemical liquids of high flow ability  
Rubber ball suitable for waste water, waste oil  
Stainless steel ball suitable for slurry of higher viscosity and strength ceramic slurry, paint and ect.

#### ARO Ball Seat

PTFE seat suitable for strong acid and alkali chemical materials.  
Viton seat suitable for acid and alkali liquids ,with good sealing performance, including oil resistant fluorine rubber and temperature resistant fluorine rubber.  
Neoprene rubber seat suitable for slight acid and alkali liquids.  
Buna-N seat suitable for transporting oily materials.

#### ARO Diaphragm

Buna-N Diaphragm suitable for transporting oily materials ,with good fatigue strength  
Neoprene Rubber Diaphragm suitable for slight acid and alkali liquids, conveying slurry ,waste water and ect.  
Viton Diaphragm suitable for acid and alkali chemical materials and liquids of higher temperature.  
EPDM Diaphragm suitable for slight and alkali liquids with aging resistance  
Teflon Diaphragm suitable for strong acid and alkali chemical materials, to be used together with rubber diaphragm  
Hytrel diaphragm good anti-abrasion ,can replace Buna-N, Apply to the majority of the neutral

#### ARO O-ring

Viton O-Ring suitable for acid and alkali  
PTFE O-Ring suitable for strong acid and alkali chemical materials  
Teflon capsuled O-ring suitable for corrosive and abrasive Fluids

**Emoclew America**, as one of the leading such manufacturers and suppliers, is professional in diaphragm metering pumps and spare parts. Don't hesitate to buy our products. We will do our best to meet your requirement.



**EMOCLEW AMERICA**

**EMOCLEW AMERICA COMPANY LLC**

7901 Kingspointe PKWY SUITE 28  
Orlando - FL - 32819 - USA

+1 (407) 683-6437

[emoclew@emoclewusa.com](mailto:emoclew@emoclewusa.com)  
[info@emoclew.com](mailto:info@emoclew.com)  
[www.emoclew.com](http://www.emoclew.com)